



**Together, we grow**

*Act justly, love tenderly and walk humbly with your God*

# **SENIOR CURRICULUM HANDBOOK**

**Year 11 – 2017**

**Year 12 – 2018**

# ***TABLE OF CONTENTS***

	<b>Page</b>
FOREWARD	5
PRELIMINARY AND HIGHER SCHOOL CERTIFICATE COURSES	6
1.0 GENERAL INFORMATION	7
2.0 WHAT TYPE OF COURSES CAN I SELECT?	7
2.1 Board Developed Courses	
2.2 Board Endorsed or Content Endorsed Courses	
2.3 Vocational Education and Training (VET) courses	
2.4 Life Skills Courses as part of a Special Program of Study	
3.0 UNIT STRUCTURE OF THE HIGHER SCHOOL CERTIFICATE	9
3.1 Extension Courses	
3.2 Board Endorsed One and Two unit Courses	
3.3 TVET Courses	
4.0 REQUIREMENTS FOR THE AWARD OF THE HSC	10
5.0 AUSTRALIAN TERTIARY ADMISSION RANK (ATAR)	10
6.0 ASSESSMENT AND REPORTING	11
6.1 What if I Leave School Before the HSC?	
7.0 PATHWAYS FOR STUDY AT BETHANY COLLEGE	12
8.0 PATTERNS OF STUDY AT BETHANY COLLEGE	13
9.0 COMBINATION OF COURSES-SOME RESTRICTIONS	13
Science	
Languages studied outside of school	
10.0 CHANGING YOUR PROGRAM OF STUDY	13
10.1 Change of Subject	
10.2 Change of Course level	
10.3 Change of Unit Value	
11.0 PROBLEMATIC SELECTIONS	14
12.0 TAFE DELIVERED (TVET) AND EXTERNALLY DELIVERED (EVET) VOCATIONAL COURSES	14
13.0 COURSE INFORMATION AND RESOURCES	15

14.0 UNIVERSITY ENTRANCE and THE AUSTRALIAN TERTIARY ADMISSION RANK (ATAR)	15
14.1 Eligibility for the ATAR	
14.2 Calculation of the ATAR	
14.3 Scaling	
15.0 KEY CONSIDERATIONS FOR CHOICE	16
15.1 Career Aspirations and needs	
16.0 GUIDELINES FOR SELECTION OF LEVELS IN ENGLISH, MATHEMATICS, RELIGIOUS EDUCATION, SCIENCE AND ECONOMICS	17
16.1 English	
16.2 Mathematics	
16.3 Science	
16.4 Economics	
16.5 Studies of Religion	
17.0 TIMELINE FOR SUBJECT SELECTION	19
18.0 COURSE DESCRIPTIONS	20
RELIGIOUS EDUCATION	21
Studies of Religion I (1 Unit)	
Studies of Religion II (2 Unit)	
Religion, Catholic Studies (1 Unit)	
ENGLISH KEY LEARNING AREA	25
English (Standard) (2 Unit)	
English (Advanced) (2 Unit)	
English Extension 1 (1 Unit)	
English Extension 2 (2 Unit)	
MATHEMATICS KEY LEARNING AREA	29
Mathematics General 2 (2 Unit)	
Mathematics General 1 (2 Unit)	
Mathematics (2 Unit)	
Mathematics Extension 1 (1 Unit)	
Mathematics Extension 2 (1 Unit)	
SCIENCE KEY LEARNING AREA	35
Biology (2 Unit)	
Chemistry (2 Unit)	
Physics (2 Unit)	
Senior Science (2 Unit)	

HUMAN SOCIETY AND ITS ENVIRONMENT KEY LEARNING AREA (HSIE) Business Studies (2 Unit) Economics (2 Unit) Geography (2 Unit) Legal Studies (2 Unit) Ancient History (2 Unit) Modern History (2 Unit) Society and Culture (2 Unit) History Extension (1 Unit)	40
TECHNOLOGY AND APPLIED STUDIES KEY LEARNING AREA (TAS) Information Processes and Technology (2 Unit) Visual Design (1 Unit) Design and Technology (2 Unit) Textiles and Design (2 Unit) Food Technology (2 Unit)	49
PERFORMING ARTS KEY LEARNING AREA Dance (2 Unit) Drama (2 Unit) Music 1 (2 Unit)	55
VISUAL ARTS KEY LEARNING AREA Visual Arts (2 Unit)	59
PERSONAL DEVELOPMENT, HEALTH AND PHYSICAL EDUCATION KEY LEARNING AREA Community and Family Studies (2 Unit) Personal Development, Health and Physical Education (2 Unit) Sport, Lifestyle and Recreation (2 Unit)	61
VOCATIONAL EDUCATION AND TRAINING (TVET) Business Services (2 Unit) Early Childhood Education and Care (2 Unit) Hospitality (2 Unit)	65
LANGUAGES Italian Beginners (2 Unit) Italian Continuers (2 Unit) French Beginners (2 Unit)	70
LIST OF TEACHING AND LEARNING COORDINATORS	73

## **FOREWORD**

The information presented in this Senior Curriculum Handbook is essential reading for parents and students in preparation for Years 11 and 12 studies at Bethany College.

I encourage you to read it and discuss it together, and to bring any questions you have to the Year 10 Parent Information Evening on

**Wednesday 10 August 2016 at 7.00pm at the College**

and the subsequent optional interview on

**Tuesday 16 August 2016**

Additional information is available before then: either contact us at the College (Leader of Learning, Careers Advisor, Year Coordinator, or another member of staff as referred by the Office staff), or refer to the websites as mentioned in the Handbook.

It is exciting for your daughter to be approaching her Higher School Certificate, and we encourage her to discuss the contents of the Handbook with her teachers, as well as with you. Her choice of courses should be guided by her interests and strengths and by her career intentions.

By continuing your enrolment for Years 11 and 12 at Bethany College, you and your daughter are indicating a willingness to participate fully in both the academic and faith life of the senior school, including attendance at all whole school events and retreats. If your daughter chooses a Vocational Course (Hospitality, Business Services or Early Childhood Education and Care) she also commits to attend two separate weeks of Work Placement to fulfil the requirements of the course; these work placements may require her attendance at a workplace anywhere in Sydney.

We look forward to supporting your daughter in her decision-making, and to her success in the Preliminary and Higher School Certificate courses.

Yours sincerely

Vicki Lavorato  
Principal

Gregg Conroy  
Leader of Learning

## **PRELIMINARY COURSES AND HIGHER SCHOOL CERTIFICATE COURSES.**

A Preliminary course will be regarded as 'assumed knowledge' for the Higher School Certificate (HSC) course and is to be internally assessed. All Preliminary course work in a subject is to be satisfactorily completed before entry to the HSC Course.

The HSC course is generally based on four terms of study. The HSC assessment is based on the HSC course only.

Bethany College offers students the opportunity to study an academic HSC, a vocational HSC or a mix, as it offers Board of Studies Developed and Board Endorsed courses as well as VET Framework courses – delivered at TAFE or school. Some of the courses will provide credit transfer towards further education or training.

**Accumulation:** The Board of Studies allows for students to accumulate their HSC over five years. Students considering this option must apply to the Principal.

**Repeating courses:** The Board of Studies allows for students to repeat one or more HSC courses within the five year accumulation period.

## **SATISFACTORY COMPLETION OF A COURSE**

The following course completion criteria refer to both Preliminary and HSC courses.

Course completion criteria-

A student will be considered to have satisfactorily completed a course if, in the Principal's view, there is sufficient evidence that the student has:

- (a) followed the course developed or endorsed by the Board;
- (b) applied herself with diligence and sustained effort to the set tasks and experiences provided in the course by the College; and
- (c) achieved some or all of the course outcomes.

Whilst the Board of Studies does not mandate attendance requirements, Principals may determine that, as a result of absence, the course completion criteria may not be met. Clearly, absences will be regarded seriously by the Principal who must give students early warning of the consequences of such absences. In extreme cases this may lead to an 'N' determination. In such a case a student would be given (clear and unambiguous) warning notification as stipulated by the Board of Studies on its website <http://www.boardofstudies.nsw.edu.au/> .

## 1.0 GENERAL INFORMATION

This is your introduction to the Higher School Certificate and the many options now available. More information is contained in the following Board of Studies publication:

- *Studying for the New South Wales Higher School Certificate – An Information Booklet for Year 10 Students*
- The Higher School Certificate recognises 13 years of schooling. In the interests of career choices and opportunities at university and TAFE, it offers you a full range of study areas matching individual abilities, interests and goals.
- Courses will be linked to further education and training.
- Extension Courses (including undergraduate university courses) enable students to undertake more in-depth study in areas of special interest.
- Vocational Education and Training courses count towards the Higher School Certificate and also lead to qualifications recognised across a range of industries.
- The HSC includes life skills courses for students with special education needs.
- The HSC fairly assesses each student's knowledge and skills.
- If you meet the minimum standard expected in a course you will receive a mark of 50. If you have a higher standard of performance you will receive a higher mark, between 50 and 100.
- For each course you will receive easy-to-understand reports which provide clear indications of what outcomes you have achieved in that course.

## 2.0 WHAT TYPES OF COURSES CAN I SELECT?

### 2.1 BOARD DEVELOPED COURSES

These courses are developed by the Board of Studies. There is a syllabus for each course which contains:

- the course objectives, structure, content and outcomes
- specific course requirements
- assessment requirements

All students entered for the HSC who are studying these courses follow these syllabuses. These courses are examined externally at the end of the HSC course and can count towards the calculation of the Australian Tertiary Admission Rank (ATAR).

### 2.2 BOARD ENDORSED OR CONTENT ENDORSED COURSES

Content Endorsed Courses (CECs) have syllabuses endorsed by the Board of Studies to cater for areas of special interest not covered in the Board Developed Courses. Some HSC VET (Vocational Education and Training) courses delivered by TAFE are Content Endorsed Courses. Some Board Endorsed Courses are one-year courses and only run in the Preliminary Year.

There is no external examination for any Content Endorsed Course, but all Board Endorsed Courses count towards the Higher School Certificate and appear on your Record of Achievement. **Board Endorsed Courses do not count in the calculation of the ATAR.**

## 2.3 VOCATIONAL EDUCATION AND TRAINING (VET) COURSES

Vocational Education and Training (VET) curriculum frameworks are Board Developed Courses that allow you to gain both HSC qualifications and Australian Qualifications Framework (AQF) VET accreditation. VET AQF qualifications are recognised by industry and employers throughout Australia. These courses require you to spend a minimum number of hours in the workplace. You receive a Statement of Attainment which reports the competencies you have achieved. Some of these courses can be studied at school while others can be studied at TAFE institutes or with other training providers.

At Bethany we provide access to -

- Business Services (240 hours)
- Hospitality (240 hours)
- Early Childhood Education and Care (240 hours)

Each framework is made up of combinations of units of competency contained in National Training Packages. Each industry framework identifies the units of competency which make up 120 and 240 hour courses for the HSC in that industry and any extension or other courses that are available. Students who undertake the optional written HSC examination in one of the 240 hour VET courses may have the result for the course included in the calculation of their ATAR. Early Childhood Education and Care will be studied as a 2 Unit Course, the result of which does not count towards an ATAR.

Industry or work placement is a mandatory component of the Vocational Framework courses and all students must complete a work placement in order to meet the Board of Studies requirements.

The placements are organised by Southern Sydney Business Education Network and are allocated to the school by Southern Sydney Business Education Network. These placements usually involve travel and may be located in a variety of Sydney suburbs or the city centre. Students do not get to organise their own placement.

A wide range of Content Endorsed and Board Endorsed VET Courses are available through TAFE. These are referred to as TVET courses. (You should check with your Careers Advisor on the TAFE delivered HSC VET courses available.)

## 2.4 LIFE SKILLS COURSES AS PART OF A SPECIAL PROGRAM OF STUDY.

Stage 6 (Years 11 and 12) Life Skills courses are available for students following a Special Program of Study for the Higher School Certificate.

Students accessing a Special Program of Study in Stage 6 will, in general, need to have completed at least four Generic Life Skills courses within a Special Program of Study in Stage 5 (Years 9 and 10). Further, participation in a Special Program of Study will be based upon an individual transition-planning process which will occur for both the Preliminary and HSC years.



Life Skills courses will have Board Developed Status and can be used in place of other Board Developed Courses to meet requirements for the Award of the Higher School Certificate. Each Life Skills Course comprises a 2 unit Preliminary Course and a 2 unit HSC Course.

The Board expects that most students would meet the outcomes for a 2 unit Preliminary Course and a 2 unit HSC Course over approximately 240 indicative hours in total (that is, 120 indicative hours in each course).

### **3.0 UNIT STRUCTURE OF THE HSC**

All courses offered for the Higher School Certificate have a unit value. Subjects may have a value of 1 unit or 2 units. Most courses are 2 unit. Each unit involves class time of approximately 2 hours per week (60 hours per year). In the HSC each unit has a value of 50 marks. Hence a 2 unit course has a value of 100 marks.

**2 units = 4 hours per week (120 hours per year)  
= 100 marks**

#### **3.1 EXTENSION COURSES**

Extension study is available in a number of subjects. Extension courses build on the content of the 2 unit course and carry an additional value of 1 unit, requiring students to work beyond the standard of the 2 unit course. Extension courses are available in English, Mathematics and History.

English and Mathematics Extension Courses are available at Preliminary and HSC levels. Students must study the Preliminary extension course in these subjects before proceeding to the two HSC extension courses (Extension 1 and Extension 2). The Extension 2 course requires students to work beyond the standard of the Extension 1 course. A HSC extension course in History **is offered and examined in Year 12 only**. Students intending to do this course must seek approval from the HSIE Coordinator and The Leader of Learning.

#### **3.2 BOARD ENDORSED ONE AND TWO UNIT COURSES**

1 unit equals approximately 2 hours of class time each week or 60 hours per year. 1 unit Board Endorsed Courses offered at Bethany College include Religion Catholic Studies, Fundamentals of English and Visual Design. These courses do not count in the calculation of the ATAR, but give you units that count towards your HSC. Sport Lifestyle and Recreation will be running as a 2 Unit Course across both years.

#### **3.3 TVET COURSES**

Some TVET courses are 2 units over 1 year and other TVET courses are 2 units over 2 years. You will need to investigate these courses with the Vocational Learning Coordinator for clarification and approval to enrol. These are VET courses delivered at TAFE.

## 4.0 REQUIREMENTS FOR THE AWARD OF THE HSC

If you wish to be awarded the HSC:

You must have satisfactorily completed courses that meet the pattern of study required by the Board of Studies for the award of the Higher School Certificate.

This includes the completion of the practical, oral or project works required for specific courses and the assessment requirements for each course.

You must have sat for and made a serious attempt at the Higher School Certificate examinations. You must study a minimum of 12 units in the Preliminary course and a minimum of 10 units in the HSC course. Both the Preliminary course and the HSC course must include the following:

- a) at least 6 units from Board Developed Courses including at least 2 units of a Board Developed Course in English;
- b) at least three courses of 2 units value or greater;
- c) at least four subjects

At most 6 units of courses in Science can contribute to Higher School Certificate eligibility.

**Students cannot study Senior Science with any other Science course in The Preliminary Year.**

**Any life skills students in English cannot study Fundamentals of English, as BOS does not allow this combination of subjects. The Fundamentals of English course is 1 unit studied in both Preliminary and HSC years and is available to students who choose Standard English only.**

The Board of Studies publication, *Studying for the New South Wales Higher School Certificate – An Information Booklet for Year 10 Students*, contains all the HSC rules and requirements you will need to know.

## 5.0 ATAR

If you wish to receive the Australian Tertiary Admission Rank (ATAR) you must study a minimum of 10 Board Developed units in the HSC Course. The booklet, *University Entry Requirements 2019 Year 10 Booklet* is published by UAC. It will contain important information about entry to university courses, course prerequisites and other information to assist your choice of HSC courses for study in Years 11 and 12 in preparation for university entry.

If you do not wish to receive an ATAR, the rest of your courses may be made up from Board Endorsed Courses once you have studied six units from Board Developed Courses.

## 6.0 ASSESSMENT AND REPORTING

School-based assessment tasks will contribute to 50% of your HSC mark. Your school assessment mark will be based on your performance in assessment tasks you have undertaken during the course. The other 50% will come from the HSC examination. This will vary slightly in some subjects that have major works.

Your HSC mark for 2 unit courses will be reported on a scale of 50 - 100. A mark of 50 will represent the minimum standard expected. If you achieve the minimum standard expected in a course you will receive a mark of 50. There will be five performance bands above 50 that correspond to different levels of achievement in knowledge, skills and understanding. The band from 90 - 100 will correspond to the highest level of achievement, and is called Band 6.

On satisfactory completion of your HSC you will receive a portfolio containing:

- The HSC Testamur
- The Record of Achievement
- Course Reports

### 6.1 WHAT IF I LEAVE SCHOOL BEFORE THE HSC?

#### (a) BOSTES Literacy and Numeracy Tests

The Board of Studies, Teaching and Educational Standards offers students planning to leave school before completing their HSC, the chance of sitting for Literacy and Numeracy Tests. They focus on the literacy and numeracy skills required by school leavers for employment and further education.

- The tests are available for students between 9.00a.m. and 4.00p.m. on any school day from late May. This makes it easier for schools to schedule tests as close as possible to the date a student is leaving school.
- The tests are now adaptive, which means students receive questions aimed at their level of ability base on their responses.
- The results are displayed immediately to students when they complete a test, and a test report – to show employers – is available the next day via their Students Online account.

#### (b) ROSA (Record of School Achievement)

Eligible students who leave school before receiving their Higher School Certificate (HSC) will receive the NSW Record of School Achievement (RoSA).

The RoSA is a cumulative credential in that it allows students to accumulate their academic results until they leave school.

The RoSA records completed Stage 5 and Preliminary Stage 6 courses and grades, and participation in any uncompleted Preliminary Stage 6 courses.

It is of specific use to students leaving school prior to the HSC.

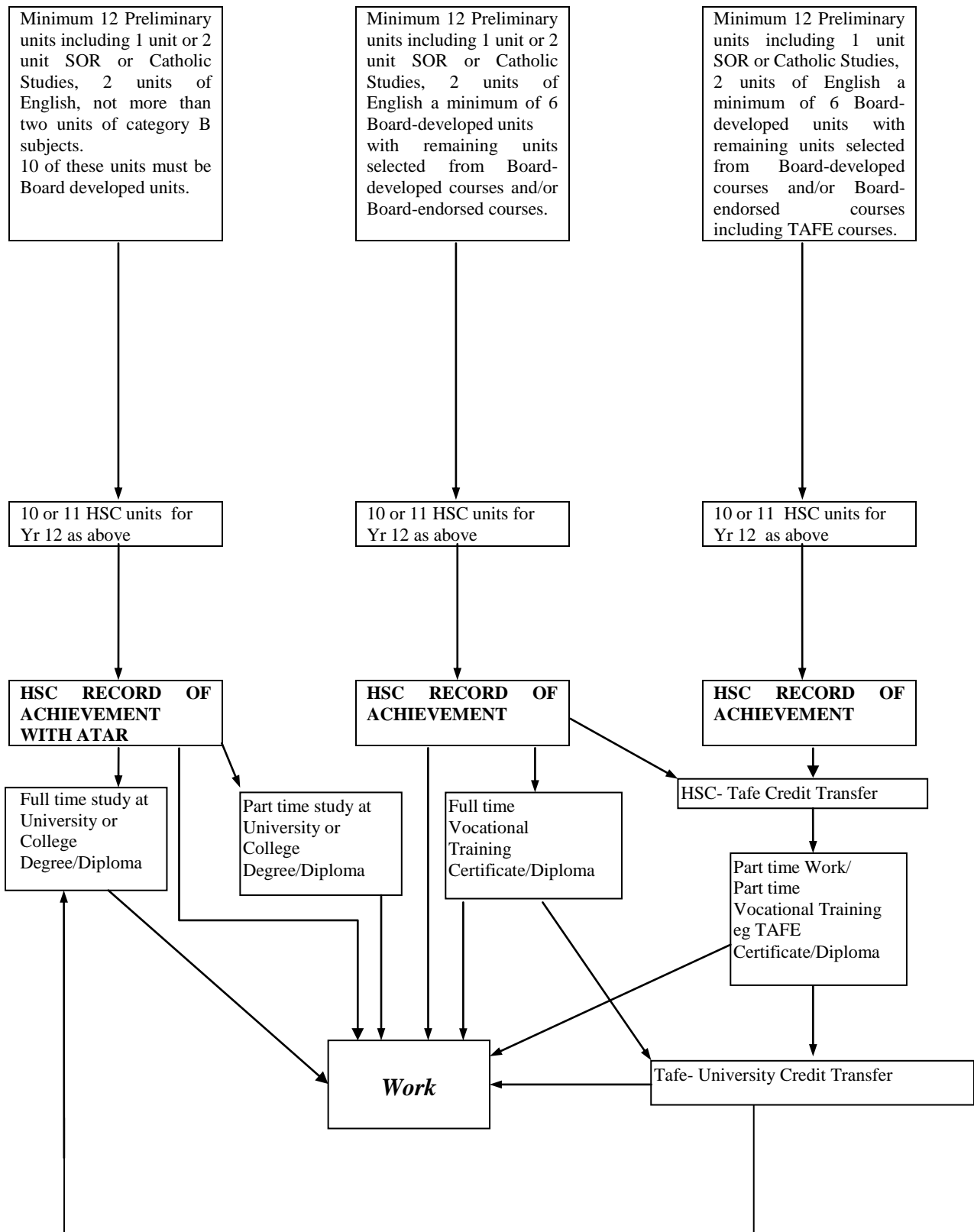
## 7.0 PATHWAYS FOR STUDY AT BETHANY COLLEGE

Students at Bethany College are able to follow the pathways shown in the diagram below.

### HSC with ATAR

### Non ATAR HSC

### Vocational HSC



## 8.0 PATTERNS OF STUDY AT BETHANY COLLEGE

Each student in the Preliminary Year will study a minimum of 12 units including at least 6 Board Developed Units. These must include:

- At least two (2) units of a Board Developed Course in English
- At least one (1) unit of Studies of Religion (SOR) or Religion, Catholic Studies (RCS)

In the HSC year each student will study 10, 11 or 12 Units with the same restrictions as above.

## 9.0 COMBINATIONS OF COURSES - SOME RESTRICTIONS

### SCIENCE

A student may present any combination, or all, of the following courses: 2 Unit Biology, 2 Unit Chemistry and 2 Unit Physics. No more than 6 units of Science can be studied. **Students cannot take Senior Science with any other Science in the Preliminary Course.** If, however, you drop out of either Biology, Chemistry or Physics at the end of the Preliminary Course, you may then select Senior Science in your HSC year, if there is a class available in Year 12, and if it is on the same timetable line, or you can rearrange your pattern of study to allow for it.

### LANGUAGES STUDIED OUTSIDE OF SCHOOL

No more than one of the four Balkan languages - Croatian, Macedonian, Serbian or Slovenian - may be studied. Some students may wish to study a language outside of school e.g. at the Saturday Community Language Centre or the Open High School. Students who access languages through correspondence via the Open High School, are charged a substantial fee to undertake these courses. In 2017 this is \$800 per language course per year.

## 10.0 CHANGING YOUR PROGRAM OF STUDY

### 10.1 CHANGE OF SUBJECT

Only under exceptional circumstances, and after successful application to the Leader of Learning, will a change of subject (e.g. 2 Unit Economics to 2 Unit Modern History) be allowed in Week 4 of 2017. Therefore, students must choose their subjects with great care, after seeking the advice of their teachers. Any change of subject must be done through the Leader of Learning on a yellow subject change form. No changes will be permissible after the start of Week 5, Term 1.

### 10.2 CHANGE OF COURSE LEVEL

This occurs when a student changes from one course within a subject area to another course within the same subject area, e.g. Mathematics 2 Unit to Mathematics General (2 Unit). This can only be done with consultation with the Teaching and Learning Coordinator and the Leader of Learning and completion of a yellow subject change form.

### 10.3 CHANGE OF UNIT VALUE

Changes in unit value/ any course must be approved by the Leader of Learning.

### 11.0 PROBLEMATIC SELECTIONS

At Bethany College we offer a broad range of courses to suit the needs and interests of our students. When making their course choices the students are counselled and assisted in this process so that they may realistically determine their HSC pathway. We have also put in place controls on which students can attempt some courses in Science, Mathematics, English, Economics and Religious Education. These have been determined after reviewing NAPLAN, School Certificate and Higher School Certificate results and grading patterns submitted to the Board of Studies.

In instances where a student has chosen a course or courses contrary to our professional advice, a form acknowledging this will need to be signed by the student and her parents. In rare cases where there is a **serious** mismatch between the course(s) chosen and the student's **demonstrated** ability, **the school reserves the right to refuse the student's entry to the course(s) in question.**

### 12.0 TAFE DELIVERED (TVET) & EXTERNALLY DELIVERED (EVET) VOCATIONAL EDUCATION COURSES

#### TVET

Some TAFE delivered courses are available each year. The number of courses varies from year to year depending on Government funding. Students are to refer any queries regarding TAFE course availability to the Careers Advisor.

Students may access only one TAFE course externally. Courses studied by students in the past as TVET course include: Hairdressing, Fashion Design, Baking and Animal Care. Students considering a TVET course should have discussions with the Careers Advisor and the Leader of Learning and approval must be granted by the Principal before enrolment is allowed.

If a student chooses to study a TVET course, these are studied in class time but off site at a TAFE College. She will have to make sure that she follows up work that she has missed in classes that were taught whilst she was off site, when she returns to Bethany the next day. Students will have to travel to the TAFE College they are studying at and some of these Courses finish at 5.00pm. Some TVET Courses have their own work placement.

**There is an additional cost for students studying a TVET Course. In 2017, this cost will be \$285.00 per course.**

#### EVET

A number of VET courses are also available at the Catholic "Trade Training Centres", Southern Cross Catholic Vocational College (SCCVC) at Burwood and St Yon (LaSalle Catholic College), Bankstown. A list of the courses available for 2017 will be made available to students.

**There is an additional cost for students studying an EVET Course. In 2017, this cost will be \$285.00 per course.**

## 13.0 COURSE INFORMATION and RESOURCES

The Board of Studies publishes syllabuses for every Board Developed Course and, for new HSC courses, specimen examination papers for use as a guide. These specimen papers and previous years' HSC examination papers along with the Examination Reports for each course may help in preparation for the examinations. This information is available on the **BOSTES WEBSITE**: [www.boardofstudies.nsw.edu.au](http://www.boardofstudies.nsw.edu.au)

Information on current HSC Prescribed Texts, Topics, Projects and Works for all Courses are published in a book of the same name. NSW HSC On-Line is available also at <http://hsc.csu.edu.au/>

HSC rules and requirements are covered in the *Assessment, Certificate and Examination Manual*, (ACE Manual) available on the Board of Studies website. <http://ace.bostes.nsw.edu.au/>

## 14.0 UNIVERSITY ENTRANCE and THE AUSTRALIAN TERTIARY ADMISSION RANK (ATAR)

The Australian Tertiary Admission Rank (ATAR) is a rank not a mark. The ATAR is calculated by the universities and is released by the Universities Admissions Centre (UAC). Whereas the Higher School Certificate serves many purposes, the ATAR serves only one – to provide a measure of overall academic achievement in the HSC which assists universities in ranking applications for tertiary selection in a fair and equitable way.

### 14.1 ELIGIBILITY FOR THE ATAR

To be eligible for an ATAR a student must complete at least ten units of Board Developed courses including at least two units of English. The Board Developed courses must include at least three courses of two units or greater, and at least four subjects. Board Endorsed Courses do not count towards an ATAR.

### 14.2 CALCULATION OF THE ATAR

The ATAR will be based on an aggregate of scaled marks in ten units of Board Developed Courses comprising:

- The best two units of English and
- The best eight units from the remaining units, subject to the provision that no more than two units of Category B courses be included. Category B courses are Hospitality and Business Services. Early Childhood Education and Care cannot be counted towards an ATAR.

Students who are seriously considering tertiary education after completion of their HSC need to be aware that the universities scale the HSC marks.

### 14.3 SCALING

What the scaling process does is to take the HSC marks and estimate what the marks would have been if all courses had been studied by all students. This ensures that students are neither advantaged nor disadvantaged by taking so-called harder or easier courses. Different courses have different quality candidatures with some courses being attempted by students of higher than average ability. Scaling attempts to remove any advantage or disadvantage by adjusting the marks so that the average per-unit mark for a course reflects the average academic quality of the course candidature. Scaling is about place in a course not about the mark.

**It should be noted that the scaling procedures are complicated and vary from year to year, because different formulas are written each year. Consequently, it is very unwise to select courses on the presumption that marks from certain courses are automatically and uniformly scaled up.**

**If students select courses which correctly match their ability, interests and career aspirations, the scaling procedures need not concern students in their course selections. More information on scaling can be found at <http://www.uac.edu.au/>. The videotape on scaling on this site is worthwhile viewing.**

### 15.0 KEY CONSIDERATIONS FOR CHOICE

- **ABILITIES**  
Choose subjects in which you are capable of doing well
- **INTERESTS**  
Choose subjects which interest you
- **MOTIVATION**  
Choose subject areas which you want to study

#### 15.1 CAREER ASPIRATIONS AND NEEDS

Inform yourself and discuss with your Careers Advisor or others knowledgeable in this area about subjects which may be pre-requisites or assumed knowledge for tertiary study in some fields. Be realistic about your career choices and about your subject choices.

**Select your pattern of study carefully as most courses extend over two years.**

**Remember Category B Courses are Business Services and Hospitality. Students may only use one of these subjects to count towards their ATAR.**



## 16.0 GUIDELINES FOR SELECTION OF LEVELS IN MATHEMATICS, ENGLISH, RELIGIOUS EDUCATION, SCIENCE AND ECONOMICS

### 16.1 ENGLISH

It is strongly recommended that students who choose English (Standard) also undertake the study of Fundamentals of English. As English is the only **compulsory subject** a student must choose in the HSC, and strong literacy is a determining factor in all other HSC subjects, this intensive attention to English has proved to be a wonderful combination for students who struggle with the writing component of senior studies. This recommendation will be applied to all English (Standard) students and we will consider exceptions on a case by case basis.

Students who wish to undertake English Extension 1 in Year 11 will be invited by the English Coordinator to do so.

Grading on your mid-year report in Year 10 will be used to direct you into the appropriate English course for Years 11 and 12

- English Advanced: either grade A, B or very high grade C.
- English Standard: either E, D or mid to low grade C.

### 16.2 MATHEMATICS

2 Unit Mathematics is available to those students who:

- complete 5.3 Mathematics; and
- Achieve either an A, B or high C grade on their mid-year report. (These students will normally be within the top 60 ranked students).

Mathematics - Extension 1 is available only to students by invitation.

There are new changes to the General Mathematics Courses. In Year 11, there is only one General Mathematics course which all students choosing General Mathematics complete. In Year 12 General Mathematics students will have a choice between two courses.

General Mathematics 2 is available to students who achieve a C or D in either 5.3 or 5.2 Mathematics in Year 10 in their mid-year report and have completed the preliminary General Mathematics course to a higher standard. This is a board developed course that counts towards an ATAR.

General Mathematics 1 (which has replaced Applied Mathematics) is available to students who achieve either a D or E in Mathematics in their mid-year report **and does not count towards an ATAR.**

### **16.3 SCIENCE**

Students who wish to undertake **CHEMISTRY** must achieve an **A or B grade** in their mid-year report in Chemistry in Year 10.

Students who wish to undertake **PHYSICS** must achieve an **A or B grade** in their mid-year report in Physics in Year 10.

Students who wish to undertake **BIOLOGY** must achieve an **A, B or C grade** in their mid-year report in Biology in Year 10 and have a high degree of proficiency in English (an A or B grade).

Students who wish to undertake **SENIOR SCIENCE** would have achieved a C or D grade in their mid-year report overall grade in Science in Year 10.

### **16.4 ECONOMICS**

Students who wish to undertake Economics should be achieving an A, B or high C in Mathematics and History or Geography in Year 10 and be satisfying the requirements for Advanced English.

### **16.5 STUDIES OF RELIGION**

#### Studies of Religion II:

Students who have demonstrated a Grade C level or higher in Religious Education and have a proficiency in English (Grade C or higher).

#### Studies of Religion I:

Studies of Religion I and Catholic Studies are available to all students.

**SUBJECT SELECTION  
YEAR 10, HSC 2018**

**ALLWELL TESTING**

3 June 2016

**DISTRIBUTION OF COURSE  
HANDBOOK**

10 June 2016

**PARENT INFORMATION  
NIGHT and SUBJECT  
MARKET**

10 August 2016

**SUBJECT EXPRESSION OF  
INTEREST ENTERED  
ONLINE**

11 August 2016

**OPTIONAL INTERVIEW BETWEEN STAFF,  
STUDENT AND PARENTS AND SUBMISSION OF  
CAREER INVESTIGATION**

16 August 2016

**ONLINE SUBJECT  
SELECTION CLOSES**

19 August 2016

# ***COURSE DESCRIPTIONS***

# ***RELIGIOUS EDUCATION***

**STUDIES OF RELIGION I (1 UNIT) (Board Developed)**

**OR**

**STUDIES OF RELIGION II (2 UNIT) (Board Developed)**

**OR**

**CATHOLIC STUDIES (1 UNIT) (Board Endorsed)**

**Students will have the choice to study 1 or 2 units of Studies of Religion, a Board Developed Course, or 1 unit of Catholic Studies, a Board Endorsed Course. When students make the choice they are committing to the course for both the Preliminary and HSC years.**

<b>Course:</b> Studies of Religion I	<b>Course No:</b> 15370
1 unit for each of Preliminary and HSC Board Developed Course	<b>Exclusions:</b> Studies of Religion II; Catholic Studies
<p><b>Course Description</b>  Studies of Religion I promotes an understanding and critical awareness of the nature and significance of religion and the influence of belief systems and religious traditions on individuals and within society.</p>	
<p><b>Preliminary Course</b>  Nature of Religion and Beliefs  - The nature of religion and beliefs including Australian Aboriginal beliefs and spiritualities, as a distinctive response to the human search for meaning in life.  Two Religious Traditions Studies from:  Buddhism, Christianity, Hinduism, Islam, Judaism  - Origins  - Principal beliefs  - Sacred texts and writings  - Core ethical teachings  - Personal devotion/expression of faith/observance.</p> <p><b>HSC Course</b>  Religion and Belief Systems in Australia post-1945  - Religious expression in Australia's multi-cultural and multi-faith society since 1945, including an appreciation of Aboriginal spiritualities and their contribution to an understanding of religious beliefs and religious expression in Australia today.  Two Religious Tradition Depth Studies from:  Buddhism, Christianity, Hinduism, Islam, Judaism  - Significant people and ideas  - Ethical teachings in the religious tradition about bioethics or environmental ethics or sexual ethics  - Significant practices in the life of adherents.</p>	

**Students for whom the course is recommended:**

This course is for students who:

- Wish to pursue critical study of current religious issues
- Can think critically on current issues
- Have demonstrated an ability in writing
- Wish to have their study in religion contribute to the ATAR

**Costs:** Excursions approximately \$20.00  
Textbook

This is a 1 unit course and does contribute to the ATAR

<b>Course:</b> Studies of Religion II	<b>Course No:</b> 15380
2 units for each of Preliminary and HSC Board Developed Course	<b>Exclusions:</b> Studies of Religion I: Religion, Catholic Studies
<p><b>Course Description</b>  Studies of Religion II promotes an understanding and critical awareness of the nature and significance of religion and the influence of belief systems and religious traditions on individuals and within society.</p>	
<p><b>Preliminary Course</b>  Nature of Religion and Beliefs  - The nature of religion and beliefs including Australian Aboriginal beliefs and spiritualities, as a distinctive response to the human search for meaning in life.  Three Religious Traditions Studies from:  Buddhism, Christianity, Hinduism, Islam, Judaism  - Origins  - Principal beliefs  - Sacred texts and writings  - Core ethical teachings  - Personal devotion/expression of faith/observance.  Religions of Ancient Origin  - The response to the human search for ultimate meaning in two religions of ancient origin from:  - Aztec or Inca or Mayan - Shinto  - Celtic - Taoism  - Nordic - an Indigenous religion from outside Australia  Religion in Australia pre-1945  - The arrival, establishment and development of religious traditions in Australia prior to 1945.  <b>HSC Course</b>  Religion and Belief Systems in Australia post-1945  - Religious expression in Australia's multi-cultural and multi-faith society since 1945, including an appreciation of Aboriginal spiritualities and their contribution to an understanding of religious beliefs and religious expression in Australia today.  Three Religious Tradition Depth Studies from:  Buddhism, Christianity, Hinduism, Islam, Judaism  - Significant people and ideas  - A religious traditions ethical teachings about bioethics or environmental ethics or sexual ethics  - Significant practices in the life of adherents.  Religion and Peace  - The distinctive response of religious traditions to the issue of peace.  Religion and Non-Religion  - The human search for meaning through new religious expression, Non-religious worldviews and the difference between Religious and Non-Religious worldviews.</p>	

**Students for whom the course is recommended:**

This course is for students who:

- Want to develop a broad understanding of world religions
- Wish to pursue critical study of current religious issues
- Can think critically on current issues
- Have demonstrated an ability in writing
- Wish to have their study of religion contribute to the ATAR.

**Costs:** Excursions approximately \$45.00

Textbook.

**Note:** This is NOT an extension course but rather a complete 2 Unit course comparable with other 2 unit courses in this handbook.

## CATHOLIC STUDIES

### TYPE OF COURSE:

Course No: 99251

1 Unit Board Endorsed Course for Preliminary and HSC Years.

### COURSE DESCRIPTION:

This course offers knowledge and understanding of the Catholic faith and is based on the Religious Education Curriculum of the Archdiocese of Sydney for Years 11 and 12. Students will be assisted towards:

- making sense of everyday life experiences in the broader contexts of mystery, complexity, confusion and awe,
- gaining access to and understanding of the traditions of the Catholic community, its story, its experiences and its teachings,
- celebrating with others the mystery and life of Christ, and
- responding to the activity of God in their lives and in the whole of creation.

### COURSE CONTENT:

In the **Preliminary course** students will study the unit titled “Being Catholic”.

In the Preliminary and HSC Courses, students will complete studies from the following units:

- Christology
- Mary and Women in the Scriptures
- New Testament Studies
- Mission Leadership and Ministry
- Church in Australian Society
- Living with Good and Evil
- God, Religion and Life
- World Religions
- Christian Prayer
- Praying through the Liturgy
- Sacraments at the Service of Communion
- Justice and Compassion
- Catholic Moral Teaching and Conscience
- Moral Issues

### STUDENTS FOR WHOM THE COURSE IS RECOMMENDED:

This course is for students who:

- Have demonstrated an ability in writing
- Can think critically on current issues
- Wish to count it towards their HSC units and appear on their Record of Achievement.

**Costs:** Excursions approximately \$20.00  
Textbook

This Course does not contribute to the ATAR.



***ENGLISH***

***KEY LEARNING AREA***

**YOU MUST STUDY A MINIMUM OF TWO UNITS  
FROM THIS KLA**

<b>Course:</b> English (Standard)	<b>Course No:</b> 15130
2 units for each of Preliminary and HSC Board Developed Course	<b>Exclusions:</b> English (Advanced); English (Extension)
<p><b>Course Description</b></p> <p>In the Preliminary English (Standard) course, students learn about language and literature by exploring and experimenting with the ways events, experiences, ideas and processes are represented in and through texts. Students study a range of texts which include prose fiction, drama, poetry, nonfiction, film, media and/or multimedia, as well as Australian texts.</p> <p>In the HSC English (Standard) course, students further strengthen their knowledge and understanding of language and literature by reflecting on and demonstrating the effectiveness of texts for different audiences and purposes. Students study at least four types of prescribed texts drawn from prose fiction, drama, poetry, nonfiction, film, media and/or multimedia, and a wide range of additional related texts and textual forms.</p>	
<p><b>Main Topics Covered</b></p> <p><b>Preliminary Course</b> – The course has two sections:</p> <ul style="list-style-type: none"> <li>• Content common to the Standard and Advanced courses is undertaken through a unit of work called an Area of Study. Students explore texts and develop skills in synthesis. The common content comprises 40% of the course content. Students undertake at least one Area of Study.</li> <li>• Electives in which students explore and examine texts and analyse aspects of meaning. The electives comprise 60% of the course content.</li> </ul> <p><b>HSC Course</b> – The course has two sections:</p> <ul style="list-style-type: none"> <li>• The HSC Common Content which consists of one Area of Study common to the HSC Standard and the HSC Advanced courses where students analyse and explore texts and apply skills in synthesis.</li> <li>• Modules that provide elective choices, which emphasise particular aspects of shaping meaning and demonstration of the effectiveness of texts for different audiences and purposes. Students are required to choose one elective from each of three Modules A, B and C.</li> </ul>	
<p><b>Particular Course Requirements</b></p> <p>In the <b>Preliminary English (Standard) Course</b> students are required to:</p> <ul style="list-style-type: none"> <li>• study Australian and other texts</li> <li>• explore a range of types of text drawn from: prose fiction; drama; poetry; nonfiction; film, media, multimedia texts</li> <li>• undertake wide reading programs involving texts and textual forms composed in and for a variety of contexts</li> <li>• integrate the modes of reading, writing, listening, speaking, and viewing and representing as appropriate</li> <li>• engage in the integrated study of language and text.</li> </ul> <p><b>HSC English (Standard) Course requires the close study of:</b></p> <ul style="list-style-type: none"> <li>• at least four types of prescribed text, one drawn from <b>each</b> of the following categories: prose fiction; drama; poetry; nonfiction <b>or</b> film <b>or</b> media <b>or</b> multimedia texts</li> <li>• a wide range of additional related texts and textual forms.</li> </ul>	

**Cost:** An excursion to the theatre may be required as part of this course.  
Approximate cost \$55.00

<b>Course:</b> English (Advanced)	<b>Course No:</b> 15140
2 units for each of Preliminary and HSC Board Developed Course	<b>Exclusions:</b> English (Standard); Fundamentals of English
<p><b>Course Description</b></p> <p>In the Preliminary English (Advanced) course, students explore, examine and analyse a range of texts which include prose fiction, drama, poetry, nonfiction, film, media and/or multimedia, as well as Australian texts. They explore the ways events, experiences, ideas, values and processes are represented in and through texts and analyse the ways texts reflect different attitudes and values.</p> <p>In the HSC English (Advanced) course, students further strengthen their knowledge and understanding of language and literature by analysing and evaluating texts and the ways they are valued in their contexts. Students study at least five types of prescribed texts drawn from prose fiction, drama, poetry, nonfiction, film, media and/or multimedia, and a wide range of additional related texts and textual forms.</p>	
<p><b>Main Topics Covered</b></p> <p><b>Preliminary Course</b> – The course has two sections:</p> <ul style="list-style-type: none"> <li>• Content common to the Standard and Advanced courses is undertaken through a unit of work called an Area of Study. Students explore texts and develop skills in synthesis. The common content comprises 40% of the course content. Students undertake at least one Area of Study.</li> <li>• Electives in which students explore, examine and analyse the ways in which texts and contexts shape and are shaped by different attitudes and values. The Electives comprise 60% of the content.</li> </ul> <p><b>HSC Course</b> – The course has two sections:</p> <ul style="list-style-type: none"> <li>• The HSC Common Content consists of one Area of Study common to the HSC Standard and the Advanced courses where students analyse and explore texts and apply skills in synthesis.</li> <li>• Modules which emphasise particular aspects of shaping meaning and representation, questions of textual integrity, and ways in which texts are valued. Students are required to choose one elective from each of three Modules A, B and C.</li> </ul>	
<p><b>Particular Course Requirements</b></p> <p>In the <b>Preliminary English (Advanced) Course</b> students are required to:</p> <ul style="list-style-type: none"> <li>• study Australian and other texts</li> <li>• explore a range of types of text drawn from: prose fiction; drama; poetry; nonfiction; film, media, multimedia texts</li> <li>• undertake wide reading programs involving texts and textual forms composed in and for a variety of contexts</li> <li>• integrate the modes of reading, writing, listening, speaking, and viewing and representing as appropriate</li> <li>• engage in the integrated study of language and text.</li> </ul> <p><b>HSC English (Advanced) Course</b> requires the close study of:</p> <ul style="list-style-type: none"> <li>• at least <b>five</b> types of prescribed text, one drawn from <b>each</b> of the following categories: Shakespearean drama; prose fiction; drama <b>or</b> film; poetry; nonfiction <b>or</b> media <b>or</b> multimedia texts</li> <li>• a wide range of additional related texts and textual forms.</li> </ul>	

**Cost:** An excursion to the theatre may be required as part of this course.  
Approximate cost \$55.00.

<b>Courses:</b> Preliminary English Extension HSC English Extension 1 HSC English Extension 2	<b>Course No:</b> <b>Course No:</b> 15160 <b>Course No:</b> 15170
1 unit of study for each of Preliminary and HSC <b>Prerequisites:</b> (a) English (Advanced) (b) Preliminary English Extension is a prerequisite for English Extension Course 1 I English Extension Course 1 is a prerequisite for English Extension Course 2 <b>Exclusions:</b> English (Standard); Fundamentals of English; English (ESL)	
<b>Course Description</b> In the Preliminary English (Extension) Course, students explore how and why texts are valued in and appropriated into a range of contexts. They consider why some texts may be perceived as culturally significant. In HSC English Extension Course 1, students explore ideas of value and consider how cultural values and systems of valuation arise. In HSC English Extension Course 2, students develop a sustained composition, and document their reflection on this process.	
<b>Main Topics Covered</b> <b>Preliminary Extension Course</b> The course has one mandatory section: Module: Texts, Culture and Value. <b>HSC English Extension Course 1</b> The course has one section. Students must complete one elective chosen from one of the three modules offered for study: <ul style="list-style-type: none"> <li>• Module A: Genre</li> <li>• Module B: Texts and Ways of Thinking</li> <li>• Module C: Language and Values.</li> </ul> <b>HSC English Extension Course 2</b> The course requires students to complete a Major Work.	
<b>Particular Course Requirements</b> In the <b>Preliminary English (Extension) Course</b> students are required to examine a key text from the past and its manifestations in one or more popular cultures. Students also explore, analyse and critically evaluate different examples of such appropriations in a range of contexts and media. <b>HSC English Extension Course 1</b> requires the study of prescribed texts (as outlined in the prescriptions document, HSC English 2009–2012 Electives and Prescribed Texts). <b>HSC English Extension Course 2</b> requires completion of a Major Work and a statement of reflection.	

**Cost:** An excursion to the theatre may be required as part of this course.  
Approximate cost \$55.00.

# ***MATHEMATICS***

## ***KEY LEARNING AREA***

## Mathematics General 2

**Course Nos:** 11235 Preliminary Mathematics General  
15235 HSC Mathematics General 2

**Prerequisites:** The Preliminary Mathematics General course has been constructed on the assumption that students have studied the content and achieved the outcomes of the *Mathematics Years 7–10 Syllabus* (2002) up to, and including, the content and outcomes of Stage 5.1. For students who intend to study the HSC Mathematics General 2 course, it is recommended that they study at least some of the Stage 5.2 content of the *Mathematics Years 7–10 Syllabus* (2002), particularly the *Patterns and Algebra* topics and *Trigonometry*, if not all of the content.

**Exclusions:** Students may **not** study any other Stage 6 preliminary mathematics course in conjunction with the Preliminary Mathematics General course, or any other Stage 6 HSC mathematics course in conjunction with the HSC Mathematics General 2 course.

### Course Description

The Preliminary Mathematics General course and the HSC Mathematics General 2 course are designed to promote the development of knowledge, skills and understanding in areas of mathematics that have direct application to the broad range of human activity. The Preliminary Mathematics General course content is written in five Strands and two Focus Studies. The HSC Mathematics General 2 course content is written in the same five Strands and includes a further two Focus Studies. As well as introducing some new mathematical content, the Focus Studies give students the opportunity to apply and develop, in contemporary contexts, the knowledge, skills and understanding initially developed in the study of the Strands.

The Preliminary Mathematics General course is the same preliminary course that forms part of the Preliminary Mathematics General/HSC Mathematics General 1 pathway. The Preliminary Mathematics General/HSC Mathematics General 2 pathway provides students with the opportunity to develop an understanding of and competence in further aspects of mathematics for a range of concurrent HSC studies, such as in the life sciences, the humanities and business studies. The pathway also provides a strong foundation for students entering the workforce and/or undertaking further training, and for university courses in the humanities, nursing and paramedical sciences.

### Main Topics Covered

#### Preliminary Mathematics General Course

- Strand: Financial Mathematics
- Strand: Data and Statistics
- Strand: Measurement
- Strand: Probability
- Strand: Algebra and Modelling
- Focus Study: Mathematics and Communication
- Focus Study: Mathematics and Driving

#### HSC Mathematics General 2 Course

- Strand: Financial Mathematics
- Strand: Data and Statistics
- Strand: Measurement
- Strand: Probability
- Strand: Algebra and Modelling
- Focus Study: Mathematics and Health
- Focus Study: Mathematics and Resources

## Mathematics General 1

**Course Nos:** 11235 Preliminary Mathematics General  
30120 HSC Mathematics General 1

**Prerequisites:** The Preliminary Mathematics General course has been constructed on the assumption that students have studied the content and achieved the outcomes of the *Mathematics Years 7–10 Syllabus* (2002) up to, and including, the content and outcomes of Stage 5.1.

**Exclusions:** Students may **not** study any other Stage 6 preliminary mathematics course in conjunction with the Preliminary Mathematics General course, or any other Stage 6 HSC mathematics course in conjunction with the HSC Mathematics General 1 course.

### Course Description

The Preliminary Mathematics General course and the HSC Mathematics General 1 (Content Endorsed) course (CEC) are designed to promote the development of knowledge, skills and understanding in areas of mathematics that have direct application to the broad range of human activity. The Preliminary Mathematics General course content is written in five Strands and two Focus Studies. The HSC Mathematics General 1 course content is written in the same five Strands and includes a further four Focus Studies. As well as introducing some new mathematical content, the Focus Studies give students the opportunity to apply and develop, in contemporary contexts, the knowledge, skills and understanding initially developed in the study of the Strands.

The Preliminary Mathematics General course is the same preliminary course that forms part of the Preliminary Mathematics General/HSC Mathematics General 2 pathway. The Preliminary Mathematics General/HSC Mathematics General 1 pathway provides students with the opportunity to develop an understanding of and competence in further aspects of mathematics for concurrent HSC studies, such as in vocational education and training courses, other practically oriented courses, and some humanities courses. It also provides an appropriate mathematical background for students entering the workforce and/or undertaking further training.

Note: As for other Content Endorsed Courses, the HSC Mathematics General 1 course will be subject to internal assessment only, and **not** formal examination at the HSC.

The two units of study for the HSC Mathematics General 1 course cannot be counted in the 10 units required for the calculation of an ATAR.

### Main Topics Covered

#### Preliminary Mathematics General Course

- Strand: Financial Mathematics
- Strand: Data and Statistics
- Strand: Measurement
- Strand: Probability
- Strand: Algebra and Modelling
- Focus Study: Mathematics and Communication
- Focus Study: Mathematics and Driving

#### HSC Mathematics General 1 Course

- Strand: Financial Mathematics
- Strand: Data and Statistics
- Strand: Measurement
- Strand: Probability
- Strand: Algebra and Modelling
- Focus Study: Mathematics and Design
- Focus Study: Mathematics and Household Finance
- Focus Study: Mathematics and the Human Body
- Focus Study: Mathematics and Personal Resource Usage

<b>Course: Mathematics</b>	<b>Course No: 15240</b>
<p>2 units for each of Preliminary and HSC Board Developed Course</p> <p><b>Prerequisites:</b> For students who intend to study the Mathematics course, it is recommended that they study the topics <i>Real Numbers</i>, <i>Algebraic Techniques</i> and <i>Coordinate Geometry</i> as well as at least some of <i>Trigonometry</i> and <i>Deductive Geometry</i> from Stage 5.3 (identified by §) of <i>Mathematics Years 7–10 Syllabus</i>, if not all of the content.</p> <p><b>Exclusions:</b> Mathematics General</p>	
<p><b>Course Description</b></p> <p>The course is intended to give students who have demonstrated strong competence in the skills of Stage 5 Mathematics an understanding of and competence in some further aspects of mathematics which are applicable to the real world. It has general educational merit and is also useful for concurrent studies in science and commerce. The course is a sufficient basis for further studies in mathematics as a minor discipline at tertiary level in support of courses such as the life sciences or commerce. Students who require substantial mathematics at a tertiary level, supporting the physical sciences, computer science or engineering, should undertake the Mathematics Extension 1 course or both the Mathematics Extension 1 and Mathematics Extension 2 courses.</p>	
<p><b>Main Topics Covered</b></p> <p><b>Preliminary Course</b> Basic arithmetic and algebra Real functions Trigonometric ratios Linear functions The quadratic polynomial and the parabola Plane geometry – geometrical properties Tangent to a curve and derivative of a function</p>	<p><b>HSC Course</b> Coordinate methods in geometry Applications of geometrical properties Geometrical applications of differentiation Integration Trigonometric functions Logarithmic and exponential functions Applications of calculus to the physical world Probability Series and series applications</p>

2 Unit Mathematics is available to those students who complete 5.3 Mathematics and score either an A or B on their mid-year report. These students will normally be within the top 60 ranked students in the mid-year report in Year 10.

**Costs:** Textbooks, scientific calculator, certain practical materials.



<b>Course: Mathematics Extension 1</b>	<b>Course No: 15250</b>
1 unit in each of Preliminary ( <i>Preliminary Mathematics Extension</i> ) and HSC Board Developed Course	
<b>Prerequisites:</b> For students who intend to study the Mathematics Extension 1 course, it is recommended that they study the Stage 5.3 optional topics (identified by #) <i>Curve Sketching and Polynomials, Functions and Logarithms</i> , and <i>Circle Geometry of Mathematics Years 7–10 Syllabus</i> .	
<b>Exclusions:</b> General Mathematics	
<b>Course Description</b> The content of this course and its depth of treatment indicate that it is intended for students who have demonstrated a mastery of the skills of Stage 5 Mathematics and are interested in the study of further skills and ideas in mathematics. The course is intended to give these students a thorough understanding of and competence in aspects of mathematics, including many which are applicable to the real world. It has general educational merit and is also useful for concurrent studies of science, industrial arts and commerce. The course is a recommended minimum basis for further studies in mathematics as a major discipline at a tertiary level and for the study of mathematics in support of the physical and engineering sciences. Although the course is sufficient for these purposes, students of outstanding mathematical ability should consider undertaking the Mathematics Extension 2 course.	
<b>Main Topics Covered</b>	
<b>Preliminary Course</b> Other inequalities Further geometry Further trigonometry Angles between two lines Internal and external division of lines into given ratios Parametric representation Permutations and combinations Polynomials Harder applications of the Mathematics Preliminary course topics	<b>HSC Course</b> Methods of integration Primitive of $\sin^2 x$ and $\cos^2 x$ Equation $\frac{dN}{dt} = k(N - P)$ Velocity and acceleration as a function of $x$ Projectile motion Simple harmonic motion Inverse functions and inverse trigonometric functions Induction Binomial theorem Further probability Iterative methods for numerical estimation of the roots of a polynomial equation Harder applications of Mathematics HSC course topics

Extension 1U Mathematics is available only to those students who complete 5.3 Mathematics and **who are invited to join the course**. Students choosing this extension course must also choose the Mathematics 2U course and therefore will undertake to study 3 units of Mathematics.

**Costs:** Textbooks, calculator, certain practical materials.

**Course: Mathematics Extension 2**

**Course No: 15260**

1 unit for the HSC

Board Developed Course

The course is designed for students with a special interest in mathematics who have shown that they possess special aptitude for the subject.

**Exclusions:** General Mathematics

**Course Description**

The course offers a suitable preparation for study of mathematics at tertiary level, as well as a deeper and more extensive treatment of certain topics than is offered in other mathematics courses. It represents a distinctly high level in school mathematics involving the development of considerable manipulative skill and a high degree of understanding of the fundamental ideas of algebra and calculus. These topics are treated in some depth. Thus, the course provides a sufficient basis for a wide range of useful applications of mathematics as well as an adequate foundation for the further study of the subject.

**Main Topics Covered**

Graphs

Complex Numbers

Conics

Integration

Volumes

Mechanics

Polynomials

Harder Mathematics Extension 1 topics

# ***SCIENCE***

## ***KEY LEARNING AREA***

<b>Course:</b> Biology	<b>Course No:</b> 15030
2 units for each of Preliminary and HSC Board Developed Course	<b>Exclusions:</b> Senior Science (Preliminary only)
<p><b>Course Description</b> Biology is the study of living organisms, life processes and interactions between organisms and their environment.</p> <p>The Preliminary course incorporates the study of the mechanisms and systems that living things use to obtain, transport and draw on materials for their own growth and repair; biotic and abiotic features of the environment and the interdependence of organisms in an ecosystem; the evolution of life on Earth; and the effects of global changes on the diversity of Australian biota during the formation of the Australian continent.</p> <p>The HSC course builds upon the Preliminary course. It examines the processes and structures that plants and animals use to maintain a constant internal environment and the way in which characteristics are transmitted from generation to generation. The options cover a variety of interest areas and draw on the increased information and understanding provided by improved technology to examine areas of current research.</p>	
<p><b>Topics Covered</b></p> <p><b>Preliminary Course</b> Biology Skills Module 8.1</p> <p><b>Core Modules</b> A Local Ecosystem Patterns in Nature Life on Earth Evolution of Australian Biota</p>	<p><b>HSC Course</b> Biology Skills Module 9.1</p> <p><b>Core Modules</b> Maintaining a Balance Blueprint of Life The Search for Better Health</p> <p><b>One Option from the following modules:</b> Communication Biotechnology Genetics: The Code Broken? The Human Story Biochemistry</p>
<p><b>Particular Course Requirements</b></p> <p>Each module specifies content which provides opportunities for students to achieve the Biology skill outcomes. Biology modules 8.1 (Preliminary) and 9.1 (HSC) provide the skills content that must be addressed within and across each course. Teachers provide opportunities based on the module content to develop the full range of skills content identified in Biology skills modules 8.1 and 9.1.</p> <p>The Preliminary course includes a field study related to local terrestrial and aquatic environments. Students will complete a minimum of 80 indicative hours of practical experiences across Preliminary and HSC course time with no less than 35 hours in the HSC course. Practical experiences must include at least one open-ended investigation in both the Preliminary and HSC Courses.</p>	

Students who wish to undertake Biology must achieve an A, B or C grade in their Year 10 mid-year report in Biology and have a high degree of proficiency in English (an A or B grade).

Students contemplating a career in a biological field (e.g. Microbiology, Toxicology, Food Technology, Biochemistry, Environmental Science, etc) are encouraged to choose Biology and Chemistry. Studying Biology provides you with the right skills for an ever-changing work environment. Employers in Government, industry and education, need students who are trained to think, analyse and communicate. Studying Biology enables you to tackle complex problems, plan and execute projects, and work as part of a team. It develops your investigative skills and gives you the tools of critical analysis and communication.

**Costs:** Compulsory Fieldwork in Year 11 approximate cost is \$55.00, Year 12 excursion approximately \$60.00 and certain practical materials, textbook and dot point book.

<b>Course:</b> Chemistry	<b>Course No:</b> 15050
2 units for each of Preliminary and HSC Board Developed Course	<b>Exclusions:</b> Senior Science (Preliminary only)
<p><b>Course Description</b> Chemistry is the study of the physical and chemical properties of matter, with a focus on substances and their interactions. Chemistry attempts to provide chemical explanations and to predict events at the atomic and molecular level.</p> <p>The Preliminary course develops a knowledge of atomic structure, chemical changes, rates of reaction and relationships between substances by focusing on increasing students' understanding of the Earth's resources, the development of increasingly sophisticated methods to extract and use metals, the importance of water on Earth and high energy carbon compounds.</p> <p>The HSC course builds on the concepts developed in the Preliminary course, expanding on areas such as the search for new sources of traditional materials, the design and production of new materials, the management and monitoring of chemicals that have been developed and/or released as a result of human technological activity and the way in which environmental problems could be reversed or minimised. The options cover a variety of interest areas and draw on the increased information and understanding provided by improved technology to examine areas of current research.</p>	
<p><b>Topics Covered</b></p> <p><b>Preliminary Course</b> Chemistry Skills Module 8.1</p> <p><b>Core Modules</b> The Chemical Earth Metals Water Energy</p>	<p><b>HSC Course</b> Chemistry Skills Module 9.1</p> <p><b>Core Modules</b> Production of Materials The Acidic Environment Chemical Monitoring and Management</p> <p><b>One Option from the following modules:</b> Industrial Chemistry Shipwrecks, Corrosion and Conservation The Biochemistry of Movement The Chemistry of Art Forensic Chemistry</p>
<p><b>Particular Course Requirements</b> Each module specifies content which provides opportunities for students to achieve the Chemistry skill outcomes. Chemistry modules 8.1 (Preliminary) and 9.1 (HSC) provide the skills content that must be addressed within and across each course. Teachers provide opportunities based on the module content to develop the full range of skills content identified in Chemistry skills modules 8.1 and 9.1.</p> <p>Students will complete a minimum of 80 indicative hours of practical experiences across Preliminary and HSC course time with no less than 35 hours in the HSC course. Practical experiences must include at least one open-ended investigation in both the Preliminary and HSC Courses.</p>	

**Students who wish to undertake Chemistry must achieve an A or B grade in their Year 10 mid-year report in Chemistry.**

Chemistry has revolutionized our world with major advances in areas such as medicine, drugs, nanotechnology, new materials and the environment. Chemistry opens the door for many careers and provides you with the right skills for an ever-changing work environment. Both the public and the private sectors increasingly draw their higher management echelons from chemistry students. Chemistry students are able to think, analyse, communicate, tackle complex problems, plan and execute projects and work as part of a team.

**Costs:** Year 11 excursion approximately \$55.00, Year 12 excursion approximately \$60.00, certain practical materials, textbook and dot point book.

<b>Course:</b> Physics	<b>Course No:</b> 15330
2 units for each of Preliminary and HSC Board Developed Course	<b>Exclusions:</b> Senior Science (Preliminary only)
<p><b>Course Description</b> Physics investigates natural phenomena, identifies patterns and applies models, principles and laws to explain their behaviour.</p> <p>The Preliminary course develops a knowledge of waves, motion, forces, fields, electricity and magnetism by focusing on increasing students' understanding of current communication technologies, the use of electricity in the home, interaction involving vehicles (such as car crashes) and the mechanisms that maintain the physical conditions of planet Earth.</p> <p>The HSC course builds on the concepts of the Preliminary course by expanding on areas such as relativity, the motor effect and solid state physics, and by focusing on space flight, motors and generators and the scientific advances involved in the development of semi-conductors and electronics. The options cover a variety of interest areas and draw on the increased information and understanding provided by improved technology to examine areas of current research.</p>	
<p><b>Topics Covered</b></p> <p><b>Preliminary Course</b> Physics Skills Module 8.1</p> <p><b>Core Modules</b> The World Communicates Electrical Energy in the Home Moving About The Cosmic Engine</p>	<p><b>HSC Course</b> Physics Skills Module 9.1</p> <p><b>Core Modules</b> Space Motors and Generators From Ideas to Implementation</p> <p><b>One Option from the following modules:</b> Geophysics Medical Physics Astrophysics From Quanta to Quarks The Age of Silicon</p>
<p><b>Particular Course Requirements</b> Each module specifies content which provides opportunities for students to achieve the Physics skill outcomes. Physics modules 8.1 (Preliminary) and 9.1 (HSC) provide the skills content that must be addressed within and across each course. Teachers should provide opportunities based on the module content to develop the full range of skills content identified in Physics skills modules 8.1 and 9.1.</p> <p>Students will complete a minimum of 80 indicative hours of practical experiences across Preliminary and HSC course time with no less than 35 hours in the HSC course. Practical experiences must include at least one open-ended investigation in both the Preliminary and HSC Courses.</p>	

Students who wish to undertake Physics must achieve an A or B grade in their Year 10 mid-year report in Physics.

Physics challenges our imaginations and leads to great discoveries, like computers, lasers, mobile phones, the internet and MRIs, that have revolutionized our world. A Physics education equips a person to work in many different and interesting places – in industrial and government labs, on university campuses, and in the aeronautical industry. In addition, many physics students leave the lab behind and work at newspapers and magazines, in government and even in the stock market – places where their problem-solving abilities, communication skills and analytical aptitude are great assets.

**Costs:** Year 11 excursion approximately \$55.00, Year 12 excursion approximately \$60.00, certain practical materials, textbook and dot point book.

<b>Course:</b> Senior Science	<b>Course No:</b> 15340
2 units for each of Preliminary and HSC Board Developed Course	<b>Exclusions:</b> Preliminary courses in Biology, Chemistry, Earth and Environmental Science and Physics
<p><b>Course Description</b></p> <p>The Preliminary course incorporates the study of the collection, storage and conservation of water resources, and the structure and function of plants, with an emphasis on Australian native plants. It examines issues associated with the protection of the body in the workplace and the interactions between organisms in local ecosystems.</p> <p>The HSC course investigates the importance of a range of biological molecules found in humans and other organisms, the physical and chemical properties of chemicals used by people on and in their bodies, and information systems. The options draw on the increased information and understanding provided by improved technology to examine a variety of interest areas.</p> <p>The Senior Science course caters for students requiring a broad overview across all disciplines of science and focuses on encouraging them to become scientifically literate citizens. The course emphasises skill development. In the HSC study pattern, students may study HSC Senior Science in combination with the HSC course in Biology, Chemistry or Physics to a maximum of six units. Students who are undertaking the Senior Science HSC course must have satisfactorily completed the Preliminary course in Senior Science or Biology or Chemistry or Physics.</p>	
<p><b>Topics Covered</b></p> <p><b>Preliminary Course</b> Senior Science Skills Module 8.1</p> <p><b>Core Modules</b> Water for Living Plants Humans at Work The Local Environment</p>	<p><b>HSC Course</b> Senior Science Skills Module 9.1</p> <p><b>Core Modules</b> Lifestyle Chemistry Medical Technology – Bionics Information Systems</p> <p><b>One Option from the following modules:</b> Polymers Preservatives and Additives Pharmaceuticals Disasters Space Science</p>
<p><b>Particular Course Requirements</b></p> <p>Each module specifies content which provides opportunities for students to achieve the Senior Science skill outcomes. Senior Science modules 8.1 (Preliminary) and 9.1 (HSC) provide the skills content that must be addressed within and across each course. Teachers provide opportunities based on the module content to develop the full range of skills content identified in Senior Science skills modules 8.1 and 9.1.</p> <p>The Preliminary course includes field experience in the identification of soil types as well as how biological factors interact to form the local environment. Students will complete a minimum of 80 indicative hours of practical experiences across Preliminary and HSC course time with no less than 35 hours in the HSC course. Practical experiences must include at least one open-ended investigation in both the Preliminary and HSC Courses.</p>	

Students who wish to undertake Senior Science would have achieved a C or D grade in their Year 10 mid-year report overall grade in Science.

**It is a Board of Studies requirement that students who wish to undertake Senior Science may not study this course in combination with either Physics, Chemistry or Biology in Year 11.**

Senior Science is a very interesting general course with a wide range of investigations and options to suit the needs of most students. Senior Science may be used for university entrance for some courses. It is a Category A Course. It is advisable to check university prerequisites before selecting it.

**Cost:** Compulsory Fieldwork approximate cost is \$55.00, certain practical materials, textbook and dot point book.

# ***HUMAN SOCIETY AND ITS ENVIRONMENT***

## ***KEY LEARNING AREA***



<b>Course:</b> Business Studies	<b>Course No:</b> 15040
2 units for each of Preliminary and HSC  Board Developed Course	<b>Exclusions:</b> Nil
<p><b>Course Description</b> Business activity is a feature of everyone’s life. The Business Studies syllabus encompasses the theoretical and practical aspects of business in ways students will encounter throughout their lives. It offers learning from the planning of a small business to the management of operations, marketing, finance and human resource in large businesses.</p> <p>Contemporary business issues and case studies are embedded in the course to provide a stimulating and relevant framework for students to apply to problems encountered in the business environment. Business Studies fosters intellectual, social and moral development by assisting students to think critically about the role of business and its ethical responsibilities to society.</p>	
<p><b>Preliminary Course</b></p> <p>Nature of business – the role and nature of business</p> <p>Business management – the nature and responsibilities of management</p> <p>Business planning – establishing and planning a small to medium enterprise</p> <p><b>HSC Course</b></p> <p>Operations – strategies for effective operations management</p> <p>Marketing – development and implementation of successful marketing strategies</p> <p>Finance – financial information in the planning and management of business</p> <p>Human resources – human resource management and business performance</p>	

**Recommended For:**

This course is designed for students who are interested in business. This course does not assume prior knowledge of Business or Commerce. However, it is recommended that students who choose this subject have good skills in reading, research and writing.

**Demands of the Course:**

Much time, work and organisational skills are needed for the Business Plan Research Task. In the preliminary year, this course is demanding. It does require an ability to conduct personal research.

**Cost:** Students may incur minimal additional costs associated with their Business Plan Research Task such as photographs and photocopying. Students are required to purchase their own texts (2).

<b>Course:</b> Economics	<b>Course No:</b> 15110
2 units for each of Preliminary and HSC Board Developed Course	<b>Exclusions:</b> Nil
<p><b>Course Description</b> Economics provides understanding for students about many aspects of the economy and its operation that are frequently reported in the media. It investigates issues such as why unemployment or inflation rates change and how these changes will impact on individuals in society. Economics develops students' knowledge and understanding of the operation of the global and Australian economy. It develops the analytical, problem-solving and communication skills of students. There is a strong emphasis on the problems and issues in a contemporary Australian economic context within the course.</p>	
<p><b>Main Topics Covered</b></p> <p><b>Preliminary Course</b> Introduction to Economics (10%) – the nature of economics and the operation of an economy Consumers and Business (10%) – the role of consumers and business in the economy Markets (20%) – the role of markets, demand, supply and competition Labour Markets (20%) – the workforce and role of labour in the economy Financial Markets (20%) – the financial market in Australia including the share market Government in the Economy (20%) – the role of government in the Australian economy.</p> <p><b>HSC Course</b> The Global Economy (25%) – Features of the global economy and globalisation Australia's Place in the Global Economy (25%) – Australia's trade and finance Economic Issues (25%) – issues including growth, unemployment, inflation, wealth and management. Economic Policies and Management (25%) – the range of policies to manage the economy.</p>	

**Recommended for:**

It is not necessary to have studied any other course to choose this subject. It is recommended that students who choose this subject have strong interpretation skills (graphs, tables), sound mathematical skills, research and essay writing skills.

**Demands of the Course:**

Wide reading of newspapers and Economic newsletters is essential to update knowledge presented in texts, and to raise awareness of current economic events and their implication.

**Cost:** Students are required to purchase their own texts. The only additional cost will be the price of any supplementary reading materials purchased by students as well as excursions/study seminars such as Year 12 HSC student lectures which cost approximately \$45.00.

<b>Course:</b> Geography	<b>Course No:</b> 15190
2 units for each of Preliminary and HSC Board Developed Course	<b>Exclusions:</b> Nil
<p><b>Course Description</b></p> <p>The Preliminary course investigates biophysical and human geography and develops students' knowledge and understanding about the spatial and ecological dimensions of geography. Enquiry methodologies are used to investigate the unique characteristics of our world through fieldwork, geographical skills and the study of contemporary geographical issues.</p> <p>The HSC course enables students to appreciate geographical perspectives about the contemporary world. There are specific studies about biophysical and human processes, interactions and trends. Fieldwork and a variety of case studies combine with an assessment of the geographers' contribution to understanding our environment and demonstrates the relevance of geographical study.</p>	
<p><b>Preliminary Course</b></p> <p>Biophysical Interactions (45%) – how biophysical processes contribute to sustainable management.  Global Challenges (45%) – geographical study of issues at a global scale.  Senior Geography Project (10%) – a geographical study of student's own choosing.</p> <p><b>HSC Course</b></p> <p>Ecosystems at Risk (33%) – the functioning of ecosystems, their management and protection.  Urban Places (33%) – study of cities and urban dynamics.  People and Economic Activity (33%) – geographic study of economic activity in a local and global context.</p> <p><b>Key concepts incorporated across all topics:</b> change, environment, sustainability, spatial and ecological dimensions, interaction, technology, management and cultural integration.</p>	
<p><b>Particular Course Requirements</b></p> <p>Students complete a senior geography project (SGP) in the Preliminary course and must undertake 12 hours of fieldwork in both the Preliminary and HSC courses.</p>	

**Recommended for:**

Interested and aware students who seek to increase their understanding of the world they live in.

**Demands of the Course:**

Much time, work and organisation are needed for the completion of the Senior Geography Project. Wide reading and awareness of current events are also essential to the course.

**Cost:** **Fieldwork is a compulsory component of the course.** This may include an overnight excursion. Approximate cost \$300.00. Students are also expected to purchase their own texts. Students may also incur minimal additional costs associated with their Senior Geography Project such as photographs and photocopying.

<b>Course:</b> Legal Studies	<b>Course No:</b> 15220
2 units for each of Preliminary and HSC Board Developed Course	<b>Exclusions:</b> Nil
<p><b>Course Description</b>  The Preliminary course develops students' knowledge and understanding of the nature and functions of law and law-making, the development of Australian and international legal systems, the Australian constitution and law reform. It examines an individual's rights and responsibilities, how disputes are resolved and examined, a contemporary issue concerning the individual and technology. Students have the opportunity to investigate issues that illustrate how the law operates in practice. This is achieved by investigating, analysing and synthesising legal information and investigating legal issues from a variety of perspectives.</p> <p>The HSC course investigates the key areas of law, justice and human rights through a variety of focus studies which consider how changes in societies influence law reform.</p>	
<p><b>Preliminary Course</b>  Part I – The Legal System (40% of course time)  Part II – The Individual and the Law (30% of course time)  Part III – The Law in Practice (30% of course time)</p> <p><b>HSC Course</b>  Core Part I: Crime (30% of course time)  Core Part II: Human Rights (20% of course time)  Part III: Two options (50% of course time)</p> <p><b>Two options are chosen from:</b>  Consumers  Global environment and protection  Family  Indigenous peoples  Shelter  Workplace  World order.</p> <p>Each topic's <b>themes and challenges</b> should be integrated into the study of the topic.  <b>Key themes incorporated across all topics:</b> Justice, law and society; Culture, values and ethics; Conflict and cooperation; Continuity and change; Legal processes and institutions; Effectiveness of the legal system.</p>	
<b>Particular Course Requirements</b> No special requirements	

**Recommended for:**

The course is designed for students with a keen interest in the Australian Legal System and a desire to increase their knowledge of the law and legal processes. However the Legal Studies course is not intended as a preparation for future lawyers. It provides a general legal education for students who wish to become empowered to function more effectively as members of society.

**Demands of the Course:**

Regular revision and wide reading to supplement classwork are essential for every topic studied.

**Cost:** Costs will include the price of supplementary reading material purchased by students as well as any excursions such as Year 12 HSC student lectures. Approximate cost is \$40.00. Students are also required to purchase their own texts (2).

<p><b>Course:</b> Ancient History 2 units for each of Preliminary and HSC Board Developed Course</p>	<p><b>Course No:</b> 15020  <b>Exclusions:</b> Nil</p>
<p><b>Course Description</b> The Preliminary course is structured to provide students with opportunities to investigate past people, groups, events, institutions, societies and historical sites from the sources available, by applying the methods used by historians and archaeologists.</p> <p>The HSC course provides the opportunity for students to investigate in depth the range and nature of archaeological and written sources that provide evidence for a life in Pompeii and Herculaneum. They also study the key features and sources of an ancient society, historical period and ancient personality.</p>	
<p><b>Main Topics Covered</b> Preliminary Course <b>Part I: Introduction</b></p> <ul style="list-style-type: none"> <li>• Investigating the past: History, Archaeology and Science</li> <li>• Case Studies (at least ONE)</li> </ul> <p><b>Part II: Studies of Ancient Societies, Sites and Sources</b> At least ONE study to be chosen.</p> <p><b>Part III: Historical Investigation</b> The investigation can be either integrated into any aspect of the Preliminary course or attempted as one project, individually or as part of a group</p> <p><b>HSC Course</b> <b>Part I: Core Study:</b> Cities of Vesuvius – Pompeii and Herculaneum (25%) <b>Part II:</b> ONE Ancient Society (25%) <b>Part III:</b> ONE Personality in their Times (25%) <b>Part IV:</b> ONE Historical Period (25%)</p>	
<p><b>Particular Course Requirements</b> In the Preliminary course, choices of studies in Parts I, II and III, must be chosen from different civilisations. The Historical Investigation and choice of topics in Parts I and II must not overlap or duplicate significantly any topic attempted for the HSC Ancient History or History Extension courses.</p>	

**Recommended for:**

This course is recommended for students who have an interest in History. It will equip students with a highly valuable set of skills and useful body of knowledge with which to tackle many of the issues and problems presented by a complex and changing world.

**Demands of the Course:**

Students will be expected to read widely and in depth as well as revising regularly. The skills involved in this course are: summarising and note taking, reading and research, essay writing, ability to understand and use source materials, ability to explain facts and argue a point of view in oral/written form, and to distinguish between historians' views and opinions.

**Cost:** Students are required to purchase their own texts. The only additional cost will be the price of any supplementary reading material purchased by students e.g. newspapers and occasional excursions/study seminars, such as Year 12 student lectures. Approximate cost is \$45.00.

**Course:** Modern History  
2 units for each of Preliminary and HSC  
Board Developed Course

**Course No:** 15270

**Exclusions:** Nil

### Course Description

The Preliminary course is structured to provide students with opportunities to investigate the role of key features, issues, individuals, groups, events and concepts from the C19th to the present using the methods of historical inquiry.

The HSC course provides the opportunity for students to investigate in depth a source-based study of World War I. They also study key features and issues in the history of ONE country during the C20th, ONE personality and ONE international study in peace and conflict.

### Main Topics Covered

#### Preliminary Course

**Part I:** Case Studies (50%)

At least TWO Case Studies should be undertaken (see below).

**Part II:** Historical Investigation (20%)

The investigation can be either integrated into any aspect of the Preliminary course or attempted as one project, individually or as part of a group.

**Part III: Core Study:** The World at the Beginning of the C20th (30%)

A source-based approach is to be used.

#### HSC Course

**Part I: Core Study:** World War I: 1914–1919: A source-based study (25%)

**Part II:** ONE National Study (25%)

**Part III:** ONE Personality in the C20th (25%)

**Part IV:** ONE International Study in Peace and Conflict (25%)

### Particular Course Requirements in the Preliminary Course

1. One Case Study must be from Europe, North America or Australia (see list A on p.18 of the syllabus).
2. One Case Study must be from Asia, the Pacific, Africa, the Middle East or Central/South America (see list B on p.18 of the syllabus).

The Historical Investigation and choice of Case Study must not overlap or duplicate significantly any topic attempted for the HSC Modern History or History Extension courses.

### Recommended For:

This course is recommended for students who have an interest in History. It will equip students with a highly valuable set of skills and useful body of knowledge with which to tackle many of the issues and problems presented by a complex and changing world.

### Demands of the Course:

Students will be expected to read widely and in depth as well as revise regularly. The skills involved in this course are: summarising and note taking, reading and research, essay writing, ability to understand and use source materials, ability to explain facts and argue a point of view in oral/written form, and to distinguish between historians' views and opinions.

**Cost:** Students are required to purchase their own texts. The only additional cost will be the price of any supplementary reading material purchased by students e.g. newspapers and occasional excursions/study seminars, such as Year 12 HSC student lectures. Approximate cost is \$45.00.

<b>Course:</b> Society and Culture	<b>Course No:</b> 15350
2 units for each of Preliminary and HSC Board Developed Course	<b>Exclusions:</b> Nil
<p><b>Course Description</b> Society and Culture develops knowledge, understanding, skills, values and attitudes essential to an appreciation of the social world. How the interaction of persons, society, culture, environment and time shape human behaviour is a central theme of study. Students develop an understanding of research methodologies and undertake research in an area of particular interest to them.</p> <p>The research findings are presented for external assessment in the Personal Interest Project (PIP). The course deals with areas of interest and relevance to students.</p>	
<p><b>Preliminary Course</b> The Social and Cultural World (30%) – the interaction between aspects of society and cultures Personal and Social Identity (40%) – socialisation and coming of age in a variety of social and cultural settings. Intercultural Communication (30%) – how people in different cultures interact and communicate.</p> <p><b>HSC Course</b> <b>Core</b> Social and Cultural Continuity and Change (30%) The Personal Interest Project (30%) – an individual research project. <b>Depth Studies</b> (40%) Two to be chosen from: 1. Belief Systems and ideologies 2. Social inclusion and exclusion 3. Social Conformity and Nonconformity</p>	
<p><b>Particular Course Requirements</b> Completion of Personal Interest Project which is supervised by class teacher over an eight month period. 30% of class time is devoted to the preparation of this major work.</p>	

**Recommended For:**

Students who are motivated, well organised and who have the ability to work both independently and in small groups. This course provides an opportunity for students to learn first hand research skills necessary for tertiary study. It is especially useful for those who are interested in studying other societies and cultures.

**Demands of the Course:**

Time required in the preparation and organisation of the Personal Interest Project. 30% of class time in Year 12 is allocated to this preparation. Development of research methods and their application. Regular access to media to ensure an up to date knowledge of society.

**Cost:** Textbooks will be purchased by the students. Students may incur minimal additional costs associated with their PIP, such as photocopying. They may also attend and excursion / study seminar such as Year 12 HSC student lectures which cost around \$45.00

<b>Course:</b> HSC History Extension	<b>Course No:</b> 15280
1 unit HSC Board Developed Course	<b>Exclusions:</b> Nil
<p><b>Course Description</b> HSC History Extension involves the study and evaluation of the ideas and processes used by historians to construct history. In Part I of the course, students investigate the question ‘What is history?’ through a selection of readings and through one case study. In Part II, students design, undertake and communicate their own personal historical inquiry.</p>	
<p><b>Main Topics Covered</b></p> <p><b>Part I: What is History?</b> (60% of course time) Key questions: Who are the historians? What are the aims and purposes of history? How has history been constructed and recorded over time? Why have the approaches to history changed over time? Students will investigate <b>one</b> case study from a selection of ancient, medieval and early modern, modern and Australian options.</p> <p><b>Part II: History Project</b> (40% of course time) An original piece of historical investigation by the student which includes a Proposal, Essay, Bibliography and Process Log.</p>	
<p><b>Particular Course Requirements</b> The Preliminary course in Modern or Ancient History is a prerequisite for the HSC course.</p>	

**Recommended For:**

**This course is only available to Year 12 students.**

**This One Unit extension course runs only in Year 12 and is available only to those students who have demonstrated a very high level of performance in the preliminary courses in either Ancient or Modern History at 2 Unit level.**

Candidates will be offered a place in this course only after discussion and approval by the HSIE Coordinator and the Leaders of Learning.

**Demands of the Course:**

This course requires independent study involving research and analysis throughout the coursework and in the completion of a major work which is marked at the Board of Studies.

**Cost:** Minimal costs are associated with completing a major work or attending student lectures approximately \$50.00.



# ***TECHNOLOGY AND APPLIED STUDIES***

## ***KEY LEARNING AREA***

<b>Course:</b> Information Processes and Technology	<b>Course No:</b> 15210
2 units for each of Preliminary and HSC Board Developed Course	<b>Exclusions:</b> Computing Applications CEC
<p><b>Course Description</b> Information Processes and Technology is the study of computer-based information systems. It focuses on information processes performed by these systems and the information technology that allows them to take place. Social, ethical and non-computer procedures resulting from the processes are considered. Different types of information systems are studied. Through project work, students will create their own information system to meet an identified need.</p> <p>For the <b>Preliminary Course</b> students will study three topics that relate to: an Introduction to Information Skills and Systems; Tools for Information Processes; and Developing Information Systems, where students are involved in both individual and team projects. All topics and their related projects are based on the information processes and skills of collecting, organising, analysing, storing and retrieving, processing, transmitting/receiving and displaying. Significant time is spent studying the tools for Information Processes as it provides the foundation of knowledge and understanding for the HSC course.</p> <p>The <b>HSC Course</b> is organised around three core topics: Project Work; Information Systems and Databases; and Communication Systems, together with four optional strands of which two must be studied. Project work is undertaken for 40% of time and is integrated with the course content. This project work is internally assessed and provides students with an opportunity to display their knowledge and understanding using Information and Communication Technologies.</p>	
<p><b>Particular Course Requirements</b> There is no prerequisite study for the 2 unit Preliminary course. Completion of the 2 unit Preliminary course is a prerequisite to the study of the 2 unit HSC course.</p>	

**Cost:** A fee of \$60.00.

**Course:** Visual Design 1 Unit

Content Endorsed Course

**Exclusions:** Projects developed for assessment in one subject are not to be used either in full or in part for assessment in any other subject.**Course Description**

This course provides students with opportunities to exploit the links between art and design by designing and making images and objects in which aesthetic qualities and symbolic meanings are as important as utilitarian function. It encourages students to explore the practices of graphic, wearable, product and interior/exterior designers in contemporary societies and promotes imaginative and innovative approaches to design within the context of the Australian environment and culture. Through the critical and historical study of designed images and objects students are able to analyse and make informed judgements about the designed works that surround them – works which reflect and construct the image they have of themselves, others and their world. The course is designed to enable students to gain an increasing accomplishment and independence in their representation of ideas in different fields of design and to understand and value how graphic design, wearable design, product design, and interior/exterior design, invite different interpretations and explanations. Students will develop knowledge, skills and understanding through the making of works in design that lead to and demonstrate conceptual and technical accomplishment. They will also develop knowledge, skills and understanding that lead to increasingly accomplished critical and historical investigations of design.

**Main Topics Covered** Modules may be selected in any of the four broad fields of: graphic design  
wearable design  
product design  
interior/exterior design.

The additional module Individual/Collaborative Project extends students' learning experiences and may reflect students' increasing interests and desire to specialise in one or more of these fields or explore the connections further between the fields. The Occupational Health and Safety Module is mandatory in any course.

**Particular Course Requirements**

Students are required to keep a diary throughout the course.

**This course will only run in the Preliminary Year as a 1 Unit subject and may be studied with Visual Arts, Design and Technology and Textiles and Design.**

**Costs:** Approximately \$200.00 and some extra costs for printing.

<b>Course:</b> Design and Technology	<b>Course No:</b> 15080
2 units for each of Preliminary and HSC Board Developed Course	<b>Exclusions:</b> Nil
<p><b>Course Description</b></p> <p>The <b>Preliminary course</b> involves the study of both designing and producing. This is explored through areas such as design theory and practice, design processes, environmental and social issues, communication, research, technologies, and the manipulation of materials, tools and techniques. The course involves hands-on practical activities which develop knowledge and skills in designing and producing. The Preliminary course includes the completion of at least two design projects. These projects involve the design, production and evaluation of a product, system or environment and includes evidence of the design process recorded in a design folio. The design folio can take a variety of different forms.</p> <p>The <b>HSC course</b> applies the knowledge and understanding of designing and producing from the preliminary course. It involves the development and realisation of a Major Design Project, a case study of an innovation, along with the study of innovation and emerging technologies. The study of the course content is integrated with the development of a Major Design Project, worth 60% of the HSC mark. This project requires students to select and apply appropriate design, production and evaluation skills to a product, system or environment that satisfies an identified need or opportunity. A case study of an innovation is also required with students identifying the factors underlying the success of the innovation, analyse associated ethical issues and discuss its impact on Australian society.</p>	
<p><b>Main Topics Covered</b></p> <p><b>Preliminary Course</b></p> <p>Involves both theory and practical work in Designing and Producing. This includes the study of design theory and practice, design processes, factors affecting design and producing, design and production processes, technologies in industrial and commercial settings, environmental and social issues, creativity, collaborative design, project analysis, marketing and research, management, using resources, communication, manufacturing and production, computer-based technologies, occupational health and safety, evaluation, and manipulation of materials, tools and techniques.</p> <p><b>HSC Course</b></p> <p>Involves the study of innovation and emerging technologies, including a case study (20%) of an innovation and the study of designing and producing including a Major Design Project. The project folio addresses 3 key areas: project proposal and project management, project development and realisation, and project evaluation.</p>	
<p><b>Particular Course Requirements</b></p> <p>In the Preliminary course, students must participate in hands-on practical activities and undertake a minimum of 2 design projects. The projects will develop skills and knowledge to be further developed in the HSC course. Students will develop their knowledge of the activities within industrial and commercial settings which support design and technology and relate these processes to the processes used in their own designing and producing. Each project will place emphasis on the development of different skills and knowledge in designing and producing. This is communicated in a variety of forms, but students should be encouraged to communicate their design ideas using a range of appropriate media.</p> <p>In the HSC course the activities of designing and producing that were studied in the Preliminary course are synthesised and applied. This culminates in the development and realisation of a Major Design Project and a case study of an innovation. Students should select and use the wide range of skills and knowledge developed in the Preliminary course, appropriate to their selected project. They must also relate the techniques and technologies used in industrial and commercial settings to those used in the development of design projects.</p>	

**Cost:** A course fee of \$100.00 per annum is charged to cover costs.  
Students will be required to purchase their own materials for their Major Design Project.

<b>Course:</b> Textiles and Design	<b>Course No:</b> 15390
2 units for each of Preliminary and HSC Board Developed Course	<b>Exclusions:</b> Nil
<p><b>Course Description</b></p> <p>The <b>Preliminary course</b> involves the study of design, communication techniques, manufacturing methods, fibres, yarns, fabrics and the Australian Textile Clothing, Footwear and Allied Industries. Practical experiences, experimenting and product manufacturing are integrated throughout the content areas and includes the completion of two preliminary textile projects. These projects develop each student's creative abilities and skills in designing, manipulating, experimenting and selecting appropriate fabrics for end use.</p> <p>The <b>HSC course</b> builds upon the Preliminary course and involves the study of fabric colouration and decoration, historical design development, cultural factors that influence design and designers, contemporary designers, end-use applications of textiles, innovations and emerging technologies, appropriate textile technology and environmental sustainability, current issues and the marketplace.</p> <p>This course involves the development of a Major Textiles Project, worth 50% of the HSC mark. The project is selected from one of the five focus areas and enables students to explore an area of interest. The project has two components: the supporting documentation and textile item/s.</p>	
<p><b>Preliminary Course</b> Design (40%) Properties and Performance of Textiles (50%) The Australian Textiles, Clothing, Footwear and Allied Industries (10%).</p> <p><b>HSC Course</b> Design (20%) Properties and Performance of Textiles (20%) The Australian Textiles, Clothing, Footwear and Allied Industries (10%) Major Textiles Project (50%).</p>	
<p><b>Particular Course Requirements</b></p> <p>In the Preliminary course students will undertake two preliminary textile projects. Preliminary Project 1 is drawn from the area of study Design and focus on the generation and communication of ideas, design modification, manipulative skills, evaluation of ideas and of the project, and management of time and resources. Preliminary Project 2 is drawn from the area of study of Properties and Performance of Textiles and focus on an analysis of fabric, yarn and fibre properties, experimental procedures, product design, fabric choice, manipulative and management skills, communication methods and the recording of information.</p> <p>In the HSC course, the Major Textiles Project allows students to develop a textile project from one of the following focus areas: apparel, furnishings, costume, textile arts, non-apparel. The selected focus area allows students to explore in detail one area of interest through a creative textile design process that integrates the areas of Design, Properties and Performance of Textiles and the Australian Textiles, Clothing, Footwear and Allied Industries.</p>	

**Cost:** A course fee of \$100.00 per annum is charged to cover costs.  
Students will be required to purchase their own materials for their Major Textiles Project.

<b>Course:</b> Food Technology	<b>Course No:</b> 15180
2 units for each of Preliminary and HSC Board Developed Course	<b>Exclusions:</b> Nil
<p><b>Course Description</b></p> <p>This course provides students the opportunity to explore the factors that influence food availability, selection and food consumption patterns in Australia. Food handling is addressed with emphasis on the increasing important safety practices and management of the sensory characteristics and functional properties of food to produce a quality product. The study of nutrition in relation to contributing effect on the health of the individual and the social and economic future of Australia. The Australian food industries structure is outlined and the operations of one organisation's response to this structure examined. Production and processing practices are investigated along with their impact evaluated. The activities that support food product development are identified and the process applied in the development of a food product throughout practical lesson experiments and theoretical content. Students will reference their contemporary world and draw conclusions surrounding contemporary nutrition, this research will form the basis of in depth investigations and debates.</p> <p>This knowledge enables students to make informed responses to changes in the production to consumption continuum and exert an influence on future developments in the food industry.</p>	
<p><b>Preliminary Course</b></p> <p>Students will study three main topics:  Food Availability and Selection (30%)  Food Quality (40%)  Nutrition (30%)</p> <p><b>HSC Course</b></p> <p>Students will study 4 main topics:  The Australian Food Industry (25%)  Food Manufacture (25%)  Food Product Development (25%)  Contemporary Nutrition Issues (25%)</p>	
<p><b>Particular Course Requirements</b></p> <p>The practical requirements of this course are used as experiments to underpin the theory content.</p>	

**Cost:** A course fee of \$100.00 per annum is charged to cover costs.

# ***PERFORMING ARTS***

## ***KEY LEARNING AREA***

<b>Course:</b> Dance	<b>Course No:</b> 15070
<p>2 units for each of Preliminary and HSC Board Developed Course</p> <p><b>Exclusions:</b> Projects developed for assessment in one subject are not to be used either in full or in part for assessment in any other subject.</p>	
<p><b>Preliminary Course</b> Students undertake a study of Dance as an art form. There is an equal emphasis on the components of Performance, Composition and Appreciation in the study of Dance. Students studying Dance bring with them a wide range of prior dance experience. Physical training and preparation of the body is fundamental and of paramount importance to the course and informs all three components of the course. Components to be completed are: Performance (40%) Composition (20%) Appreciation (20%) Additional (20%)(to be allocated by the teacher to suit the specific circumstances/context of the class).</p> <p><b>HSC Course</b> Students continue common study in the three course components of Performance, Composition and Appreciation and also undertake an in-depth study of dance in one of the Major Study components, either Performance, Composition, Appreciation or Dance and Technology Core (60%) Performance 20%, Composition 20%, Appreciation 20% Major Study (40%) Performance or Composition or Appreciation or Dance and Technology.</p>	
<p><b>Particular Course Requirements</b> The interrelation of the course components is a major feature in the study of dance as an art form and is emphasised throughout both courses. The published <i>Course Prescriptions</i>, which may change in total or in part every three years, indicate works and artists to be studied in the HSC Course in Core Appreciation and Major Study Appreciation.</p>	

**Cost:** Excursion cost is sent to family when it is booked. One only. Excursion approximately \$50.00.  
Course \$60.00



<b>Course:</b> Drama	<b>Course No:</b> 15090
2 units for each of Preliminary and HSC Board Developed Course <b>Exclusions:</b> Projects developed for assessment in one subject are not to be used either in full or in part for assessment in any other subject.	
<p><b>Course Description</b> Students in Drama study the practices of Making, Performing and Critically Studying. Students engage with these components through collaborative and individual experiences.</p> <p><b>Preliminary Course</b> Content comprises an interaction between the components of Improvisation, Playbuilding and Acting, Elements of Production in Performance and Theatrical Traditions and Performance Styles. Learning comes from practical and theoretical experiences in each of these areas.</p> <p><b>HSC Course</b> Australian Drama and Theatre and Studies in Drama and Theatre involve the theoretical study through practical exploration of the social, cultural, historical and political aspects of traditions of theatre, exploring relevant acting techniques, performance styles and spaces. The <b>Group Performance</b> (3-6 students) involves creating a piece of original theatre (8–12 minutes duration). It provides opportunity for each student to demonstrate his or her performance skills. For the <b>Individual Project</b>, students demonstrate their expertise in a particular area. They choose one project from Critical Analysis <b>or</b> Design <b>or</b> Performance <b>or</b> Script-writing <b>or</b> Video Drama.</p>	
<p><b>Main Topics Covered</b></p> <p><b>Preliminary Course</b> Improvisation, Playbuilding, Acting Elements of Production in Performance Theatrical Traditions and Performance Styles</p>	<p><b>HSC Course</b> Australian Drama and Theatre (Core content) Studies in Drama and Theatre Group Performance (Core content) Individual Project</p>
<p><b>Particular Course Requirements</b> The Preliminary course informs learning in the HSC course. In the study of theoretical components, students engage in practical workshop activities and performances to assist their understanding, analysis and synthesis of material covered in areas of study. In preparing for the group performance, the published <i>Course Prescriptions</i> include a topic list which is used as a starting point. The Individual Project is negotiated between the student and the teacher at the beginning of the HSC course. Students choosing Individual Project Design or Critical Analysis must base their work on one of the texts listed in the published text list. This list changes every three years. Students must ensure that they do not choose a text or topic they are studying in Drama in the written component or in any other HSC course when choosing Individual Projects.</p>	

**Recommended For:**

Those students who appreciate drama and theatre. It is suited to students who wish to gain in confidence and to improve their communication skills. The Drama course is suited to students who might want to work in the Theatre/Film Industry.

**Demands of the Course:**

Be prepared for hard work, as rehearsals may occur at lunchtimes, after school and during holidays. Students must complete a log book, exams as well as written and practical work. Excursions in and out of school hours are a key component of this course. Given the demand of a group performance component, the course would only suit student with a minimum attendance rate of 95%. Poor attendance patterns may preclude your enrolment into this course.

**Cost:** Excursion cost is sent to family when it is booked. One only.  
Course \$60.00

**Note:** Both the preliminary and HSC courses comprise extensive group work and therefore students with recurring incidents of poor attendance will not be considered for this course.

**Course:** Music 1

**Course No:** 15290

2 units for each of Preliminary and HSC  
Board Developed Course

**Exclusions:** Music 2

**Course Description**

In the Preliminary and HSC courses, students will study the concepts of music through the learning experiences of performance, composition, musicology and aural within the context of a range of styles, periods and genres.

**Main Topics Covered**

Students study three topics in each year of the course. Topics are chosen from a list of 21 which covers a range of styles, periods and genres.

**Particular Course Requirements**

**HSC course**

In addition to core studies in performance, composition, musicology and aural, students select **three** electives from any combination of performance, composition and musicology. These electives must represent **each** of the three topics studied in the course.

Students selecting Composition electives will be required to compile a portfolio of work as part of the process of preparing a submitted work. The portfolio may be requested by the Board of Studies to validate authorship of the submitted work.

**Recommended For:**

Students with an interest in Music for leisure or as a career are suited to this course. It is particularly relevant to those interested in working in the Music Industry or an associated area.

**Demands of the Course:**

2 Unit Music Course 1 is a practical course, for which there are no prerequisites. Students are able to specialise in one or more areas of performance, composition or musicology in the HSC Course.

**Cost:** Excursion cost is sent to family when it is booked. One only. Approximate cost \$80.00.  
Course \$60.00

# ***VISUAL ARTS***

## ***KEY LEARNING AREA***

**Course:** Visual Arts

**Course No:** 15400

2 units for each of Preliminary and HSC  
Board Developed Course

**Exclusions:**

Projects developed for assessment in one subject are not to be used either in full or in part for assessment in any other subject.

**Course Description**

The Visual Art course involves student participation in practical ‘art making’ lessons as well as theory classes. These lessons serve to broaden students understanding of the artworld and its conventions through critical and historical investigations of Artists, artworks, critics and historians from a variety of cultures, traditions and eras. These theoretical investigations contribute to informing and developing participants own practice as artists. The course culminates with the generation of a ‘**Body of Work**’ in the *HSC* course and the sitting of a **written exam**.

The *Preliminary* course is broadly focused in its investigation of the antecedents to and the development of **Modernism**, while the *HSC* course provides a deeper investigation of key contemporary artists work and practice through a series of case studies. While the course builds upon units studied in Stages 4 and 5, there is **no prerequisite** for students to have studied Visual Art in years 9 or 10.

**Preliminary Course** learning opportunities focus on:

The nature of practice in art making, art criticism and art history through different case study investigations.

The roles and relationships between artists, artworks, the world and audiences in the artworld.

How students may develop meaning ,focus and interest in their work.

Developing an understanding of material practice through working with a variety of genres, forms and conventions.

**HSC Course** learning opportunities focus on:

How students develop their art making practice and knowledge of art history and criticism.

How students develop an informed points of view and increasing independence in the investigation and interpretation of artworks.

How students interpret the relationships between artists, artworks, the world and audiences and apply these to their own practice.

How students develop meaning in their work.

**Particular Course Requirements**

**Preliminary Course:**

Artworks in at least two expressive forms and use of the Visual Art Process Diary (VAPD)

A broad investigation of ideas in art making, art criticism and art history.

**HSC Course:**

Development of a body of work and use of the Visual Art Process Diary (VAPD)

A minimum of five Case Studies (4–10 hours each)

Deeper and more complex investigations in art making, art criticism and art history.

**Demands of the Course:**

The senior Visual Art course in both **Year 11** (Preliminary) and **Year 12** (HSC) is demanding but also greatly rewarding. The department has an expectation that all students electing to study the subject are **sincere** in their desire to learn more about the Visual Arts and develop their own artmaking practice. Success in this course requires students to apply the qualities of **Enthusiasm, Independence, Diligence, and Persistence** in all aspects of the course and may require students to work independently, outside of normal classroom lessons including lunch time and school holidays.

The course is divided into *two* parts;

1) **Practical** (Art Making)

2) **Art History & Criticism**. (Art Theory)

Both aspects are equally important and each is worth **50%** of the total marks for the course.

During the course, the department makes every effort to provide students access and exposure to the broader artworld by participating in events such excursions and gallery visits.

**Costs:** A general course fee of \$170 per annum.

(This **excludes** the costs for excursions, text books and niche materials students may require for the development of their Body of Work).

Overall, a sincere desire and commitment, strong work ethic and diligent application to work is required from students in Visual Art to achieve personal success.

***PERSONAL DEVELOPMENT,  
HEALTH AND PHYSICAL  
EDUCATION***

***KEY LEARNING AREA***

<b>Course:</b> Community and Family Studies	<b>Course No:</b> 15060
2 units for each of Preliminary and HSC Board Developed Course	<b>Exclusions:</b> Nil
<p><b>Course Description</b> Community and Family Studies is designed to develop in each student an understanding of the diverse nature and interdependence of families and communities, within Australian society. The course enables students to plan and manage resources effectively in order to address contemporary issues facing families and communities.</p>	
<p><b>Main Topics Covered</b></p> <p><b>Preliminary Course</b>  <b>Resource Management</b> Basic concepts of the resource management process (approximately 20% of course time).  <b>Individuals and Groups</b> The individual's roles, relationships and tasks within groups (approximately 40% of course time).  <b>Families and Communities</b> Family structures and functions and the interaction between family and community (approximately 40% of course time).</p> <p><b>HSC Course</b>  <b>Research Methodology</b> Research methodology and skills culminating in the production of an Independent Research Project (approximately 25% of course time).  <b>Groups in Context</b> The characteristics and needs of specific community groups (approximately 25% of course time).  <b>Parenting and Caring</b> Issues facing individuals and groups who adopt roles of parenting and caring in contemporary society (approximately 25% of course time).</p> <p><b>HSC Option Modules</b>  Select <b>one</b> of the following (approximately 25% of course time):  <b>Family and Societal Interactions</b> Government and community structures that support and protect family members throughout their lifespan.  <b>Social Impact of Technology</b> The impact of evolving technologies on individuals and lifestyle.  <b>Individuals and Work</b> Contemporary issues confronting individuals as they manage roles within both their family and work environments.</p>	
<p><b>Particular Course Requirements</b> Students are required to complete an Independent Research Project as part of the HSC internal assessment. The focus of the Independent Research Project should be related to the course content of one or more of the following areas: individuals, groups, families, communities, resource management.</p>	

**Costs:** 1-2 excursions per year approximately \$60.00.  
Course \$100.00.

<b>Course:</b> Personal Development, Health and Physical Education	<b>Course No:</b> 15320
2 units for each of Preliminary and HSC Board Developed Course	<b>Exclusions:</b> Nil
<p><b>Course Description</b> The Preliminary course examines a range of areas that underpin health and physical activity. This includes how people think about health and physical activity, the management of personal health and the basis for how the body moves. Students have the opportunity to select from a range of practical options in areas such as first aid, outdoor recreation, composing and performing, and fitness choices.</p> <p>In the HSC course, students focus on major issues related to Australia’s health status. They also look at factors that affect physical performance. They undertake optional study from a range of choices. This includes investigating the health of young people or of groups experiencing health inequities. In other options, students focus on improved performance and safe participation by learning about advanced approaches to training or sports medicine concepts. There is also an opportunity to think critically about the factors that impact on sport and physical activity in Australian society.</p>	
<p><b>Preliminary Course</b> <b>Core Topics</b> (60%) Better Health for Individuals The Body in Motion <b>Optional Component</b> (40%) Students select <b>two</b> of the following options: First Aid Composition and Performance Fitness Choices Outdoor Recreation</p>	<p><b>HSC Course</b> <b>Core Topics</b> (60%) Health Priorities in Australia Factors Affecting Performance <b>Optional Component</b> (40%) Students select <b>two</b> of the following options: The Health of Young People Sport and Physical Activity in Australian Society Sports Medicine Improving Performance Equity and Health</p>
<p><b>Particular Course Requirements</b> In addition to core studies, students select <b>two</b> options in each of the Preliminary and HSC courses.</p>	

**Costs:** 1 – 2 excursions per year. Approximate cost \$140.00.  
There may be an overnight excursion depending on the Preliminary Options chosen approximately \$260.00.

**Course:** Sport, Lifestyle and Recreation Studies 2 Units

**Content Endorsed Course**

Operates on both, Preliminary and HSC Years as 2 units in each year.

**Exclusions:** Students studying Board Developed PDHPE must not study CEC **modules** which duplicate PDHPE modules.

Students will learn about the importance of a healthy and active lifestyle and recognise the need to be responsible and informed decision-makers. This course enables students to further develop their understanding of and competence in a range of sport and recreational pursuits. They are encouraged to establish a lifelong commitment to being physically active and to achieving movement potential.

Through the course students will develop:

- knowledge and understanding of the factors that influence health and participation in physical activity
- knowledge and understanding of the principles that impact on quality of performance
- an ability to analyse and implement strategies to promote health, activity and enhanced performance
- a capacity to influence the participation and performance of self and others.

The course provides the opportunity to specialise in areas of expertise or interest through optional modules such as:

Aquatics

Athletics

First Aid

Fitness

Specific Sports

Gymnastics

Outdoor Recreation

Sports Administration

Coaching

Social Perspectives of Sport

**Cost:** Approximately \$300.00 for excursions incorporating classes taken off site.



# ***VOCATIONAL EDUCATION AND TRAINING (VET)***

## ***KEY LEARNING AREA***

<b>POSSIBLE QUALIFICATIONS</b>	Students who are assessed as competent for all Units of Competency in the 240 hour course are eligible for the following award under the Australian Qualifications Framework: <b>Certificate II in Business (BSB20115)</b>			
<b>UNITS</b>	Preliminary and HSC Years as 2 units in each year.			
<b>GENERAL INFORMATION</b>	The above qualification is nationally recognised entry-level qualification for employment in the Business Services industry. This course would suit students who are interested in a career in the office or business environment and in other personal contact & service occupations such as legal or medical secretary, business management, marketing, advertising and finance. The knowledge, skills and attitudes acquired by students in this course will also be of value in future study and daily life.			
<b>UNITS TO BE UNDERTAKEN</b>	<b>Unit Code</b>	<b>Units of competency</b>	<b>AQF Status</b>	<b>BOSTES</b>
		<b>Requirements</b>	12 units: 1 Core, 11 Elect	9 Compulsory, 95 hours Elect
	BSBWHS201	Contribute to health and safety of self and others	Core	Compulsory
	BSBWOR204	Use business technology	Elective	Compulsory
	BSBCMM201	Communicate in the workplace	Elective	Compulsory
	BSBIND201	Work effectively in a business environment	Elective	Compulsory
	BSBWOR203	Work effectively with others	Elective	Compulsory
	BSBINM201	Process and maintain workplace information	Elective	Compulsory
	BSBWOR202	Organise and complete daily work activities	Elective	Compulsory
	BSBSUS201	Participate in environmentally sustainable work practices	Elective from another TP	Compulsory
	BSBCUS201	Deliver a service to customers	Elective	Compulsory
	BSBADM311	Maintain business resources	Elective	Elective
	BSBINM202	Handle mail	Elective	Elective
	BSBITU307	Develop keyboarding speed and accuracy	Elective	Elective
	BSBITU201	Produce simple word processed documents	Elective	Elective
BSBITU202	Create and use spreadsheets	Elective	Elective	
BSBITU203	Communicate electronically	Elective	Elective	
<b>HSC INFORMATION</b>	The course is a Category B course and may be counted towards the ATAR. Mandatory units of competency from the above list are examined. Students should note that the HSC examination in this subject is optional. Students not wishing to achieve a ATAR need not sit the HSC examination. <b>NB: only 2 units of Category B subjects can be counted towards the ATAR.</b> <i>The syllabus is currently being revised by BOSTES. The units listed above are a guide to those to be included.</i>			
<b>WORK PLACEMENT</b>	The Board of Studies requires students to complete a minimum of 70 hours of work placement. Work placement is a mandatory component of the course and must be completed prior to the HSC exam.			
<b>ASSESSMENT</b>	This course is competency based and the student's performance is recognised against a prescribed industry standard. Students are assessed using a variety of oral, written and practical assessment methods. They are given a number of opportunities to demonstrate competence across the range of competency standards covered by this course. Both formal and informal assessment events will occur throughout Years 11 and 12.			
<b>RECOGNITION OF PRIOR LEARNING (RPL)</b>	You may be entitled to apply for Recognition of Prior Learning. If you have completed any training, either through your part-time work, TAFE or other courses you have completed recently, or through experience gained in other ways you can apply for RPL. You should talk to your School VET Coordinator, Careers Adviser or Business Services teachers for further information.			
<b>COSTS</b>	A course fee of \$100.00 is currently charged to cover materials and consumables.			
<b>LINKS TO OTHER COURSES OR QUALIFICATIONS</b>	The course outcomes are recognised by TAFE and other Registered Training Providers. Students gaining the above qualification may move directly into the next qualification level with another training provider. The 240 hours may also be credited against a related traineeship.			

<b>POSSIBLE QUALIFICATIONS</b>	Students who are assessed as competent for all Units of Competency in the 240 hour course are eligible for the following under the Australian Qualifications Framework: <b>Statement of Attainment towards Certificate III in Early Childhood Education and Care (CHC30113)</b> An additional 240 hours of <b>Specialisation Study</b> is needed to complete the qualification: <b>Certificate III in Early Childhood Education and Care (CHC30113)</b>																																																
<b>UNITS</b>	Preliminary and HSC Years as 2 units in each year. (Specialisation Study is additional units studied in Year 12)																																																
<b>GENERAL INFORMATION</b>	The above qualification is recognised entry-level qualifications for employment in the Community Services industry. The course would suit students who are interested in either a career in the Child-care Industry or part-time work while undertaking further study. Students may also wish to complete this course for general interest.																																																
<b>UNITS TO BE UNDERTAKEN</b>	<table border="1"> <thead> <tr> <th>Unit Code</th> <th>Units of competency</th> <th>AQF Status</th> <th>HSC Status</th> </tr> </thead> <tbody> <tr> <td></td> <td style="text-align: right;"><b>Requirements</b></td> <td>18 units: 15 Core, 3 Elect</td> <td>1 Compulsory, sufficient hrs elect</td> </tr> <tr> <td>HLTWS001</td> <td>Participate in work health and safety</td> <td>Core</td> <td>Core</td> </tr> <tr> <td>CHCECE026</td> <td>Work in partnership with families to provide appropriate education and care for children</td> <td>Elective</td> <td>Elective</td> </tr> <tr> <td>CHCECE002</td> <td>Ensure the health and safety of children</td> <td>Core</td> <td>Core</td> </tr> <tr> <td>CHCECE009</td> <td>Use an approved learning framework to guide practice</td> <td>Core</td> <td>Core</td> </tr> <tr> <td>CHCPRT001</td> <td>Identify and respond to children and young people at risk</td> <td>Core</td> <td>Core</td> </tr> <tr> <td>CHCECE003</td> <td>Provide care for children *</td> <td>Core</td> <td>Core</td> </tr> <tr> <td>CHCECE010</td> <td>Support the holistic development of children in early childhood *</td> <td>Core</td> <td>Core</td> </tr> <tr> <td>CHCECE005</td> <td>Provide care for babies and toddlers *</td> <td>Core</td> <td>Core</td> </tr> <tr> <td>CHCECE004</td> <td>Promote and provide healthy food and drinks</td> <td>Core</td> <td>Core</td> </tr> <tr> <td>HLTAID004</td> <td>Provide an emergency first aid response in an education and care setting</td> <td>Core</td> <td>Core</td> </tr> </tbody> </table>	Unit Code	Units of competency	AQF Status	HSC Status		<b>Requirements</b>	18 units: 15 Core, 3 Elect	1 Compulsory, sufficient hrs elect	HLTWS001	Participate in work health and safety	Core	Core	CHCECE026	Work in partnership with families to provide appropriate education and care for children	Elective	Elective	CHCECE002	Ensure the health and safety of children	Core	Core	CHCECE009	Use an approved learning framework to guide practice	Core	Core	CHCPRT001	Identify and respond to children and young people at risk	Core	Core	CHCECE003	Provide care for children *	Core	Core	CHCECE010	Support the holistic development of children in early childhood *	Core	Core	CHCECE005	Provide care for babies and toddlers *	Core	Core	CHCECE004	Promote and provide healthy food and drinks	Core	Core	HLTAID004	Provide an emergency first aid response in an education and care setting	Core	Core
	Unit Code	Units of competency	AQF Status	HSC Status																																													
		<b>Requirements</b>	18 units: 15 Core, 3 Elect	1 Compulsory, sufficient hrs elect																																													
	HLTWS001	Participate in work health and safety	Core	Core																																													
	CHCECE026	Work in partnership with families to provide appropriate education and care for children	Elective	Elective																																													
	CHCECE002	Ensure the health and safety of children	Core	Core																																													
	CHCECE009	Use an approved learning framework to guide practice	Core	Core																																													
	CHCPRT001	Identify and respond to children and young people at risk	Core	Core																																													
	CHCECE003	Provide care for children *	Core	Core																																													
	CHCECE010	Support the holistic development of children in early childhood *	Core	Core																																													
	CHCECE005	Provide care for babies and toddlers *	Core	Core																																													
CHCECE004	Promote and provide healthy food and drinks	Core	Core																																														
HLTAID004	Provide an emergency first aid response in an education and care setting	Core	Core																																														
	<i>Ask your teacher how it might be possible to undertake a <b>Specialisation Study</b> to complete the qualification.</i>																																																
<b>HSC INFORMATION</b>	This is a Board Endorsed Course and therefore no HSC examination. This is a non ATAR course.																																																
<b>WORK PLACEMENT</b>	A minimum of 35 hours of work placement is a <b>mandatory</b> component of this Board of Studies course and must be completed prior to the HSC examination period. However, the units noted above * require performance and knowledge evidence to be gathered during 120hrs of work placement. Therefore, unless additional work placement is undertaken, these units will not be recorded as achieved on the final transcript, though they will be counted towards your HSC.																																																
<b>ASSESSMENT</b>	This course is competency based and the student's performance is recognised against a prescribed industry standard. Students are assessed using a variety of oral, written and practical assessment methods. They are given a number of opportunities to demonstrate competence across the range of competency standards covered by this course. Both formal and informal assessment events will occur throughout Years 11 & 12.																																																
<b>RECOGNITION OF PRIOR LEARNING (RPL)</b>	You may be entitled to apply for Recognition of Prior Learning. If you have completed any training, either through your part-time work, TAFE or other courses you have completed recently, or through experience gained in other ways you can apply for RPL. You should talk to your School VET Coordinator, Careers Adviser or class teachers for further information.																																																
<b>REQUIREMENTS</b>	This industry requires students to have: <ul style="list-style-type: none"> <li>• Current immunisation records</li> <li>• Police check</li> <li>• Working with children check</li> </ul>																																																
<b>COSTS</b>	Course fee \$100 per annum. An additional cost of approximately \$70 to cover the externally provided First Aid course in Year 12.																																																
<b>LINKS TO OTHER COURSES OR QUALIFICATIONS</b>	The course outcomes are recognised by TAFE and other Registered Training Providers. Students gaining the above qualification may move directly into the next qualification level with another training provider. The 240 hours may also be credited against a related traineeship or apprenticeship.																																																

<b>POSSIBLE QUALIFICATIONS</b>	Students who are assessed as competent for all Units of Competency in the 240 hour course are eligible for the following award under the Australian Qualifications Framework: <b>Certificate II in Kitchen Operations SIT20312</b> Students who are assessed as competent for some of the Units of Competency will be eligible for an AQF <b>Statement of Attainment towards Certificate II in Kitchen Operations SIT20312.</b>																																																																
<b>UNITS</b>	Preliminary and HSC Years as 2 units in each year.																																																																
<b>GENERAL INFORMATION</b>	The above qualification is recognised entry-level qualifications for employment in the Hospitality industry. The course would suit students who are interested in a career in the Tourism and Hospitality Industry, working in hotels, motels, restaurants, clubs, catering organisations, resorts, travel and tourism organisations. Students may also wish to complete this course for general interest and to assist in part-time work while undertaking further study.																																																																
<b>UNITS TO BE UNDERTAKEN</b>	<table border="1"> <thead> <tr> <th>Unit Code</th> <th>Units of competency</th> <th>AQF Status</th> <th>HSC Status</th> </tr> </thead> <tbody> <tr> <td></td> <td>Requirements</td> <td>13 Units: 8 Core, 5 Elect (Min 3 listed in qual; Max 2 other TP)</td> <td>All Comp (80hrs), All one stream, 65hrs Elect</td> </tr> <tr> <td>BSBWOR203B</td> <td>Work effectively with others</td> <td>Core</td> <td>Mandatory</td> </tr> <tr> <td>SITHIND201</td> <td>Source and use information on the hospitality industry</td> <td>E (L)</td> <td>Mandatory</td> </tr> <tr> <td>SITXFSA101</td> <td>Use hygienic practices for food safety</td> <td>Core</td> <td>Mandatory</td> </tr> <tr> <td>SITXWHS101</td> <td>Participate in safe work practices</td> <td>Core</td> <td>Mandatory</td> </tr> <tr> <td>SITHCCC101</td> <td>Use food preparation equipment</td> <td>Core</td> <td>KO&amp;Cookery Stream</td> </tr> <tr> <td>SITHCCC201</td> <td>Produce dishes using basic methods of cookery</td> <td>Core</td> <td>KO&amp;Cookery Stream</td> </tr> <tr> <td>SITHKOP101</td> <td>Clean kitchen premises and equipment</td> <td>Core</td> <td>KO&amp;Cookery Stream</td> </tr> <tr> <td>SITXFSA201</td> <td>Participate in safe food handling practices</td> <td>E (L)</td> <td>KO&amp;Cookery Stream</td> </tr> <tr> <td>SITXINV202</td> <td>Maintain the quality of perishable items</td> <td>Core</td> <td>Elective</td> </tr> <tr> <td>SITHCCC207</td> <td>Use cookery skills effectively</td> <td>Core</td> <td>Elective</td> </tr> <tr> <td>SITHCCC102</td> <td>Prepare simple dishes</td> <td>E (L)</td> <td>Elective</td> </tr> <tr> <td>SITHCCC202</td> <td>Produce appetisers and salads</td> <td>E (L)</td> <td>Elective</td> </tr> <tr> <td><i>SITHCCC103</i></td> <td><i>Prepare sandwiches</i></td> <td><i>E (L)</i></td> <td><i>Elective</i></td> </tr> <tr> <td><i>SITHFAB204</i></td> <td><i>Prepare and serve espresso coffee</i></td> <td><i>E (L)</i></td> <td><i>Elective</i></td> </tr> </tbody> </table>	Unit Code	Units of competency	AQF Status	HSC Status		Requirements	13 Units: 8 Core, 5 Elect (Min 3 listed in qual; Max 2 other TP)	All Comp (80hrs), All one stream, 65hrs Elect	BSBWOR203B	Work effectively with others	Core	Mandatory	SITHIND201	Source and use information on the hospitality industry	E (L)	Mandatory	SITXFSA101	Use hygienic practices for food safety	Core	Mandatory	SITXWHS101	Participate in safe work practices	Core	Mandatory	SITHCCC101	Use food preparation equipment	Core	KO&Cookery Stream	SITHCCC201	Produce dishes using basic methods of cookery	Core	KO&Cookery Stream	SITHKOP101	Clean kitchen premises and equipment	Core	KO&Cookery Stream	SITXFSA201	Participate in safe food handling practices	E (L)	KO&Cookery Stream	SITXINV202	Maintain the quality of perishable items	Core	Elective	SITHCCC207	Use cookery skills effectively	Core	Elective	SITHCCC102	Prepare simple dishes	E (L)	Elective	SITHCCC202	Produce appetisers and salads	E (L)	Elective	<i>SITHCCC103</i>	<i>Prepare sandwiches</i>	<i>E (L)</i>	<i>Elective</i>	<i>SITHFAB204</i>	<i>Prepare and serve espresso coffee</i>	<i>E (L)</i>	<i>Elective</i>
	Unit Code	Units of competency	AQF Status	HSC Status																																																													
		Requirements	13 Units: 8 Core, 5 Elect (Min 3 listed in qual; Max 2 other TP)	All Comp (80hrs), All one stream, 65hrs Elect																																																													
	BSBWOR203B	Work effectively with others	Core	Mandatory																																																													
	SITHIND201	Source and use information on the hospitality industry	E (L)	Mandatory																																																													
	SITXFSA101	Use hygienic practices for food safety	Core	Mandatory																																																													
	SITXWHS101	Participate in safe work practices	Core	Mandatory																																																													
	SITHCCC101	Use food preparation equipment	Core	KO&Cookery Stream																																																													
	SITHCCC201	Produce dishes using basic methods of cookery	Core	KO&Cookery Stream																																																													
	SITHKOP101	Clean kitchen premises and equipment	Core	KO&Cookery Stream																																																													
	SITXFSA201	Participate in safe food handling practices	E (L)	KO&Cookery Stream																																																													
	SITXINV202	Maintain the quality of perishable items	Core	Elective																																																													
	SITHCCC207	Use cookery skills effectively	Core	Elective																																																													
	SITHCCC102	Prepare simple dishes	E (L)	Elective																																																													
	SITHCCC202	Produce appetisers and salads	E (L)	Elective																																																													
<i>SITHCCC103</i>	<i>Prepare sandwiches</i>	<i>E (L)</i>	<i>Elective</i>																																																														
<i>SITHFAB204</i>	<i>Prepare and serve espresso coffee</i>	<i>E (L)</i>	<i>Elective</i>																																																														
<b>HSC INFORMATION</b>	The course (26501) is a Category B course and may be counted towards the ATAR. Students should note that the HSC examination in this subject is optional. Students not wishing to achieve a ATAR need not sit the HSC examination. <b>NB: only 2 units of Category B subjects can be counted towards the ATAR.</b>																																																																
<b>WORK PLACEMENT</b>	The Board of Studies requires students to complete a minimum of 70 hours of work placement. Work placement is a mandatory component of the course and must be completed prior to the HSC exam.																																																																
<b>ASSESSMENT</b>	This course is competency based and the student's performance is recognised against a prescribed industry standard. Students are assessed using a variety of oral, written and practical assessment methods. They are given a number of opportunities to demonstrate competence across the range of competency standards covered by this course. Both formal and informal assessment events will occur throughout Years 11 & 12.																																																																
<b>RECOGNITION OF PRIOR LEARNING (RPL)</b>	You may be entitled to apply for Recognition of Prior Learning. If you have completed any training, either through your part-time work, TAFE or other courses you have completed recently, or through experience gained in other ways you can apply for RPL. You should talk to your School VET Coordinator, Careers Adviser or Hospitality teachers for further information.																																																																
<b>COSTS</b>	<ul style="list-style-type: none"> <li>• Purchase of a full chef's uniform (new approx. \$90).</li> <li>• A course fee per year of \$240.00 is currently charged to cover materials, consumables and the hire of the tool kit.</li> </ul>																																																																
<b>LINKS TO OTHER COURSES OR QUALIFICATIONS</b>	The course outcomes are recognised by TAFE and other Registered Training Providers. Students gaining the above qualification may move directly into the next qualification level with another training provider. The 240 hours may also be credited against a related traineeship or apprenticeship.																																																																

# ***LANGUAGES***

## ***KEY LEARNING AREA***

<b>Course:</b> Italian Beginners	<b>Course No:</b> 15790
2 units for each of Preliminary and HSC Board Developed Course <b>Exclusions:</b> Italian Continuers; Italian Extension Strict eligibility rules apply to the study of this subject. Check with your teacher or refer to Section 8.2.2.3 of the Board's <i>ACE Manual</i> .	
<b>Course Description</b> In the Preliminary and HSC courses, students will develop the linguistic and intercultural knowledge and understanding, and the speaking, listening, reading and writing skills to communicate in Italian. Topics studied through two interdependent perspectives, <i>the personal world</i> and <i>the Italian-speaking communities</i> , provide contexts in which students develop their communication skills in Italian and their knowledge and understanding of language and culture.  Students' skills in, and knowledge of Italian will be developed through tasks associated with a range of texts and text types, which reflect the topics. Students will also gain an insight into the culture and language of Italian-speaking communities through the study of a range of texts.	
<b>Main Topics Covered</b> Family life, home and neighbourhood People, places and communities Education and work Friends, recreation and pastimes Holidays, travel and tourism Future plans and aspirations.	
<b>Particular Course Requirements:</b> Nil	
<b>Demands of the Course:</b> This is a demanding course that requires commitment and some independent learning.	
<b>Costs:</b> Excursion costs will be kept to a minimum, approximately \$25-40. Students will be required to purchase text books and a dictionary.	
<b>Course:</b> Italian Continuers	<b>Course No:</b> 15800
2 units for each of Preliminary and HSC Board Developed Course <b>Prerequisites:</b> School Certificate Italian or equivalent knowledge is assumed. <b>Exclusions:</b> Italian Beginners.	
<b>Course Description</b> The Preliminary and HSC courses have, as their organisational focuses, themes and associated topics. Students' skills in, and knowledge of Italian will be developed through tasks associated with a range of texts and text types, which reflect the themes and topics. Students will also gain an insight into the culture and language of Italian-speaking communities through the study of a range of texts.	
<b>Themes:</b> the individual the Italian-speaking communities the changing world.  Students' language skills are developed through tasks such as: conversation responding to an aural stimulus responding to a variety of written material writing for a variety of purposes studying the culture of Italian-speaking communities through texts.	
<b>Particular Course Requirements:</b> Nil	
<b>Demands of the Course:</b> This is a demanding course that requires commitment and some independent learning.	
<b>Costs:</b> Excursion costs will be kept to a minimum, approximately \$50.00. Students will be required to purchase text books and a dictionary.	

**Course:** French Beginners

**Course No:** 15670

2 units for each of Preliminary and HSC

Board Developed Course

**Exclusions:** French Continuers; French Extension  
Strict eligibility rules apply to the study of this subject. Check with your teacher or refer to Section 8.2.2.3 of the Board's *ACE Manual*.

**Course Description**

In the Preliminary and HSC courses, students will develop the linguistic and intercultural knowledge and understanding, and the speaking, listening, reading and writing skills to communicate in French. Topics studied through two interdependent perspectives, *the personal world* and *the French-speaking communities*, provide contexts in which students develop their communication skills in French and their knowledge and understanding of language and culture.

Students' skills in, and knowledge of French will be developed through tasks associated with a range of texts and text types, which reflect the topics. Students will also gain an insight into the culture and language of French-speaking communities through the study of a range of texts.

**Main Topics Covered**

Family life, home and neighbourhood

People, places and communities

Education and work

Friends, recreation and pastimes

Holidays, travel and tourism

Future plans and aspirations.

**Particular Course Requirements:** Nil

**Demands of the Course:**

This is a demanding course that requires commitment and some independent learning.

**Costs:**

Excursion costs will be kept to a minimum, approximately \$25-40.

Students will be required to purchase text books and a dictionary.

## **LIST OF TEACHING AND LEARNING COORDINATORS**

Leader of Learning	Mr Conroy
Leader of Pedagogy	Ms Maish
Religious Education	Mrs Kennaugh
English	Mr Raptis, Ms Field
HSIE	Mrs Matthews, Mrs Smit
Languages	Mr Gianni
Mathematics	Mr Bishop, Mr Weber
PDHPE	Mr Guthrie
Acting Performing Arts	Mr Bernardo
Science	Dr Trent, Mrs Janev
TAS	Ms Rowland
Visual Arts	Mr McLean
Vocational Learning / Careers	Ms Gereige